



NOBLE FAMILY



APPLICATION

Round and square ceiling- recessed down light for indoor installation, The exquisite electroplating surface treatment art using the unique Nano dust-proof technology, make it wear-resistant and anti - hard scratches., with the patent optical lens zoom design, the fixture can accurate transform beam angle to 10° ,17°, 25°, 36°, 60° to meet the lighting requirements. You can install it in public areas, stairways, corridors, foyers, shops, offices, etc. . . .

APPROVALS & STANDARDS

Saudi Standard SASO 2902 *	Energy Efficiency, functionality & labeling requirements for lighting products -Part2-
IECEE certificate *	As per IEC60598-2-3:2002+A1:2011 IEC60598-1:2014+A1:2017
Power supply approval marks	UL/CSA/CE/ENEC/CCB/CCC
Degree of protection provided by enclosures, ingress protection(IP)	IEC 60529:2013

*: Approvals and certificate are under process.

TECHNICAL INFORMATION

FAMILY	NOBLE
Wattage	5W 10W 12W
CRI	80 90
CCT	2700K 3000K 3500K 4000K 5000K 5700K 6500K
Beam	10° 17° 25° 36° 60°
Lumen	451.5lm 645.1lm 774lm
Finish	Black White
Material	Die-casting aluminum body and heatsink, PMMA lenes
Driver	Tridonic Philips Lifud



shine black



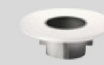
gold



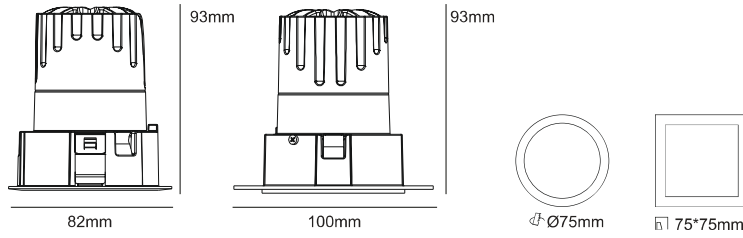
silver



matt black

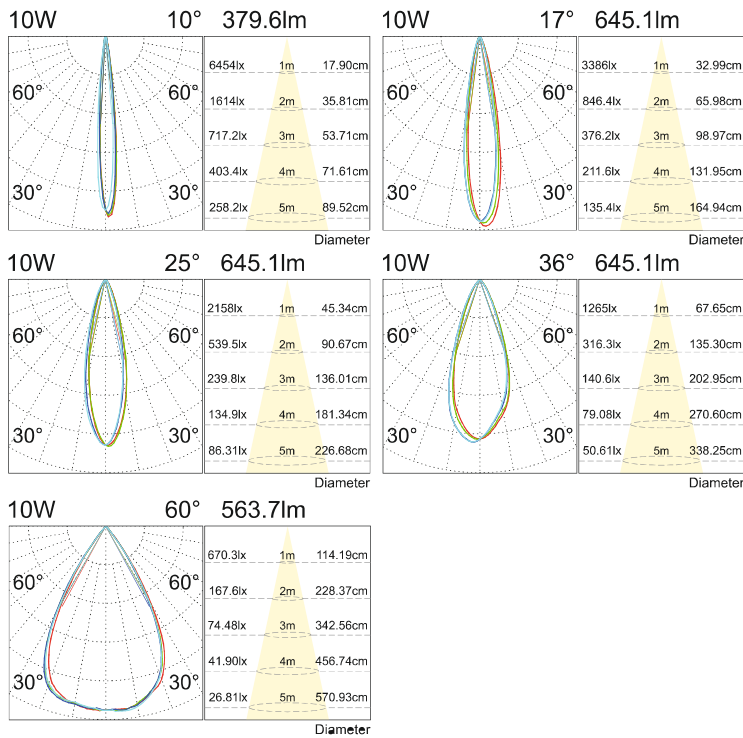


CUTOUT & DIMENSION



MODEL	POWER	DIMENSION	CUT HOLE
AES0285W-R	5W	Ø82mm * H93mm	Ø75mm
AES0285W-S	5W	L100mm*W100mm*H93mm	75*75mm
AES02910W-R	10W	Ø82mm * H93mm	Ø75mm
AES02910W-S	10W	L100mm*W100mm*H93mm	75*75mm
AES03012W-R	12W	Ø82mm * H93mm	Ø75mm
AES03012W-S	12W	L100mm*W100mm*H93mm	75*75mm

LIGHT DISTRIBUTION DIAGRAM



ORDERING INFORMATION

EXAMPLE : AES028-10W-80-30-20-R-SB-25-PH-ND

Model	Wattage	CRI	CCT	IP	Frame	Reflector	Beam	DriverType	Dimming
AES028	10W	80	30	20	R	SB	25°	Ph	ND
AES028	5W	80	27 2700K	20	R Round	SB shine Black	10°	Tr Tridonic	ND Non Dim
AES029	10W	90	30 3000K	44	S Square	G Gold	17°	Ph Philips	TD Triac Dim
AES030	12W		35 3500K			RS Silver	25°	Lf Lifud	VD 0/1-10VDim
			40 4000K			MB MatteBlack	36°		DA DALI Dim
			50 5000K				60°		
			57 5700K						
			65 6500K						

