

ADVANCED ENERGY SOLUTIONS

DOWN LIGHT SOLUTIONS

LED

**PRODUCTS
PORTFOLIO**

LIGHT IS LIFE

*Lighting says everything about the working environment.
Lighting is at the heart of the way people think and build.*

Modern lighting requires products and services of the highest standards, innovative solutions, technical excellence, design flexibility and consistent performance.

ADVANCED ENERGY SOLUTIONS COMPANY was established to meet the highly growing demands of energy management and energy efficiency.

Either you own small facility or large plant we are here to give you the best solution in the field.

With a talented highly qualified engineering team we are striving to meet the highest standards using state of the art technologies to meet all requirements of our customers.

Our team also provide scientifically certified lighting studies.



Our collection are manufactured with high quality in accordance with national/international standards with specifications to meet the harsh climate of the Arab Gulf countries.

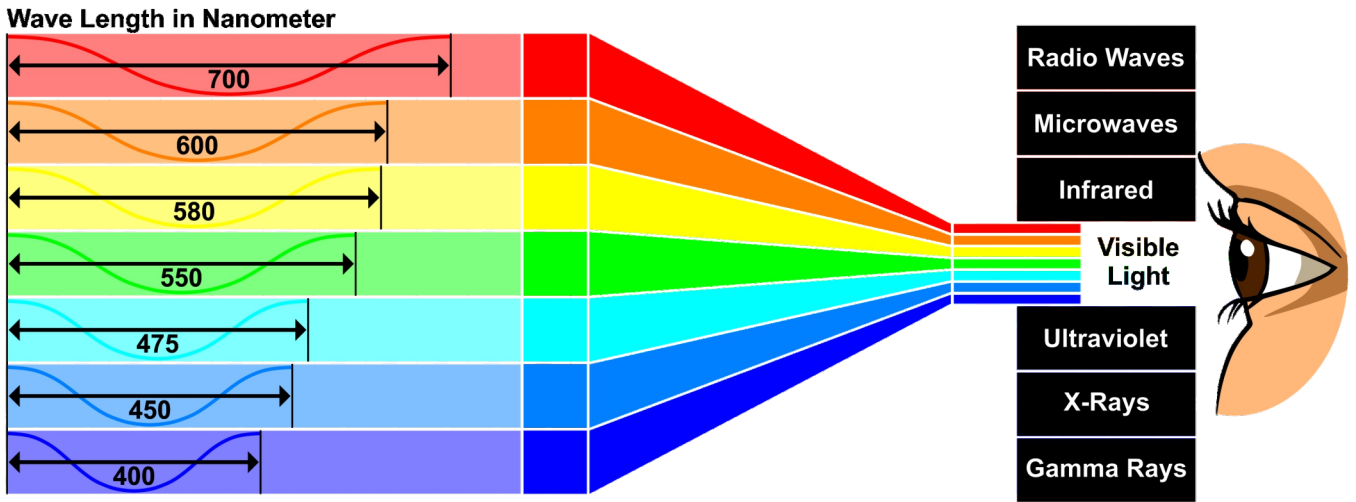
We offer a five-years warranty on all of our fixtures, as we design and calculate the body of the fixture in accordance with the LED chip and the driver to ensure the efficiency and quality of the product.

Whether indoor or outdoor fixtures with 50K hours working life and up to 100K hours as an option.



50,000 working hours

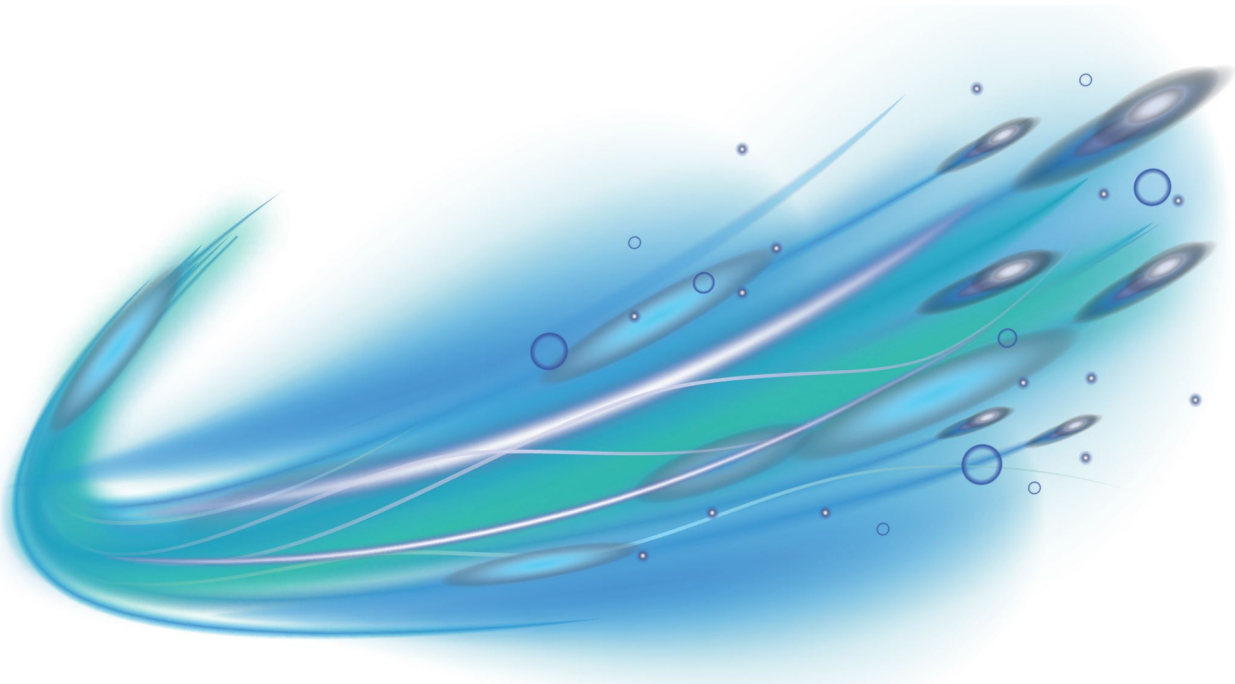
INTRODUCTION TO LIGHT SCIENCE



Light or visible light is electromagnetic radiation within the portion of the electromagnetic spectrum that can be perceived by the human eye. Visible light is usually defined as having wavelengths in the range of 400–700 nm, between the infrared (with longer wavelengths) and the ultraviolet (with shorter wavelengths).

The main source of light on Earth is the Sun. Historically, another important source of light for humans has been fire, from ancient campfires to modern LED lamps, the development of solid state materials and electronic systems give the chance of artificial lighting to simulate sun light with maximum efficiency.

The primary properties of visible light are intensity, propagation direction, frequency or wavelength spectrum.





CORRELATED COLOR TEMPERATURE (CCT)

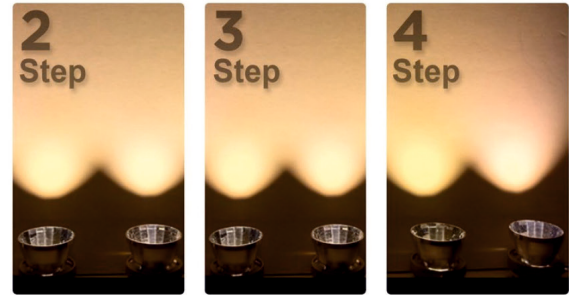
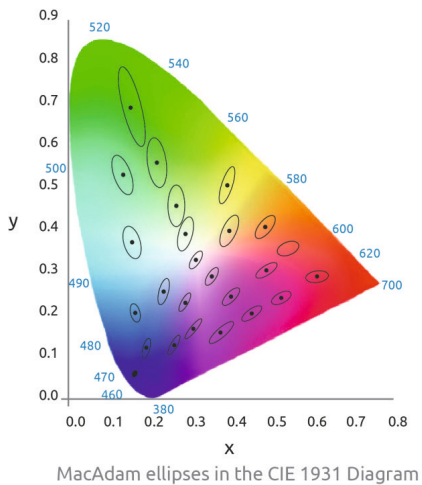


COLOR RENDERING INDEX (CRI)



It is a quantitative measure of the ability of a light source to reveal the colors of various objects faithfully in comparison with an ideal or natural light source like sunlight, the CRI of the sunlight is 100, that means if the CRI is close to 100 the colors will be reflected truly and naturally, the illustration above shows how CRI can affect the appearance of colors.

MACADAM ELLIPSE

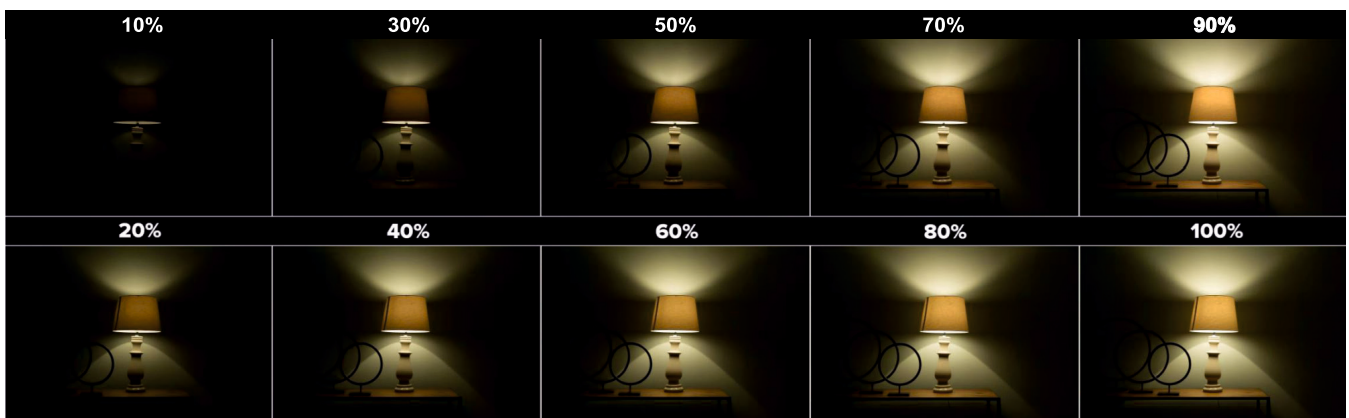


n-steps MacAdam ellipses

MacAdam ellipse is a region on a chromaticity diagram (CIE 1931) which contains all colors which are indistinguishable to the average human eye, from the color at the center of the ellipse.

Slight color differences in the appearance of LED light are measured in steps, the higher the N-steps, the greater the visual difference between two white light sources.

DIMMING OF LIGHT



Dimmers are devices connected to a light fixture and used to lower the brightness of light, you can use several different dimming options to dim LED Lighting, as phase cut (Triac), 0/1-10v dimming and DALI system, but beware that the driver must support type of dimming you use.

A-Phase Cut (Triac) dimming:

This type of control is a traditional one, accomplished without any need for an additional control wires. It involves connecting a dimmer in series between one of the mains wire and the equipment.

B-0/1-10v dimming:

The 0/1-10V system enables dimming of the brightness from around 10% to 100%. This is done by sending an analogue signal (0/1-10v) to the equipment over an additional two wires control system.

C-DALI system:

Digital Addressable Lighting Interface, DALI is a digital and addressable communication interface for lighting systems. Digital signals are transmitted over a bus of two-wire control wire, used for control of large systems.

BEAMS OF LIGHT

Beam of light is a directional projection of light energy radiating from a light source. Different beam angles are better for certain cases;

For example :

A display of shop goods might need a spotlight with a very narrow beam, while for office lighting you will need a wide beam fixture.

There are also special cases where beams are not symmetrical, as in street light where special type of lenses are used to distribute light.

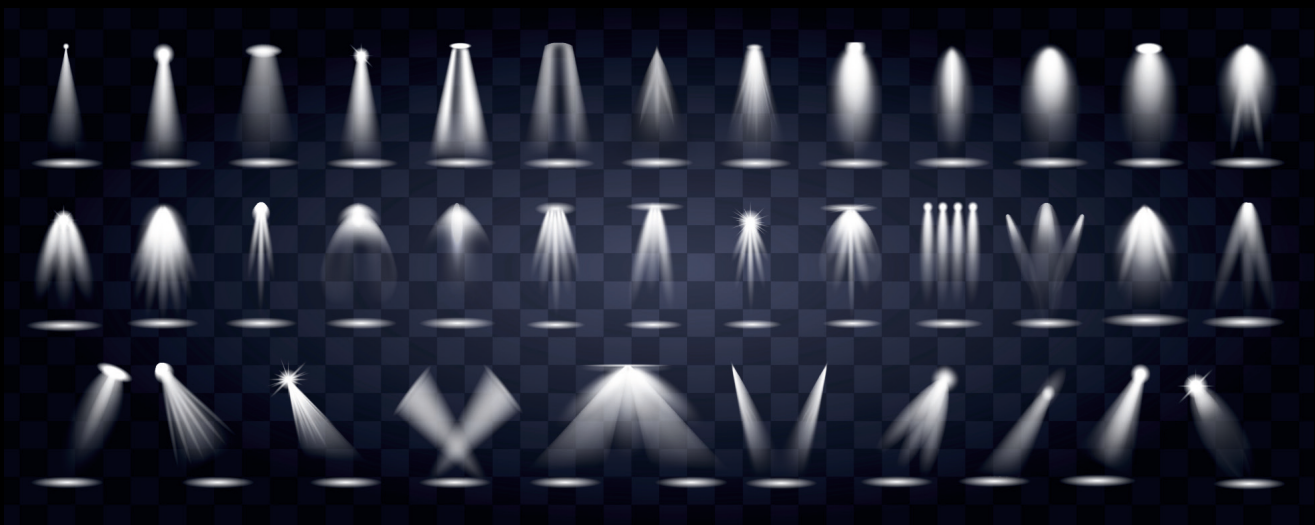
• HOMOGENEOUS BEAMS

• Wide Beams

Wide beam angle is usually used for general lighting, like office rooms and school rooms, wide beam fixtures are characterize by soft and anti-glare diffusing system with low UGR.

• Narrow Beams

Narrower beam angle is preferable when you need to illuminate surfaces and focus on smaller details.



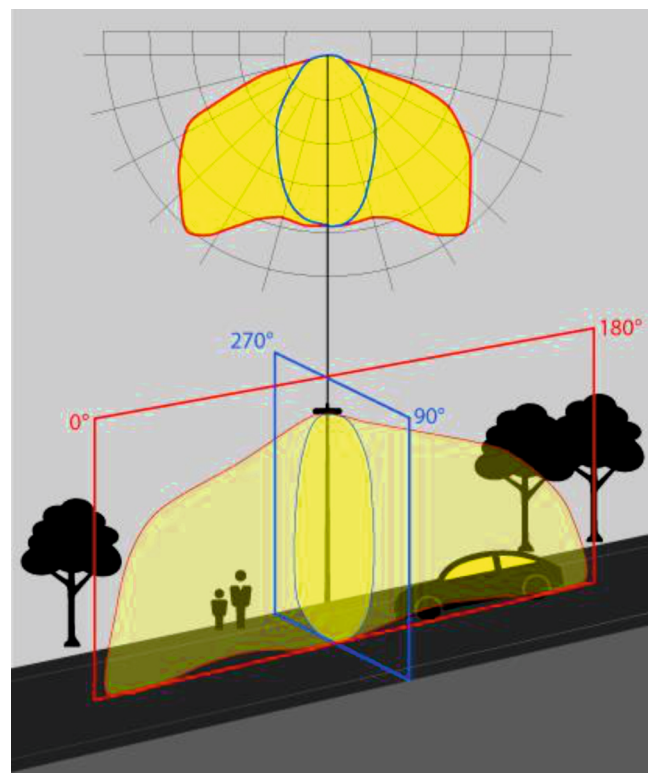
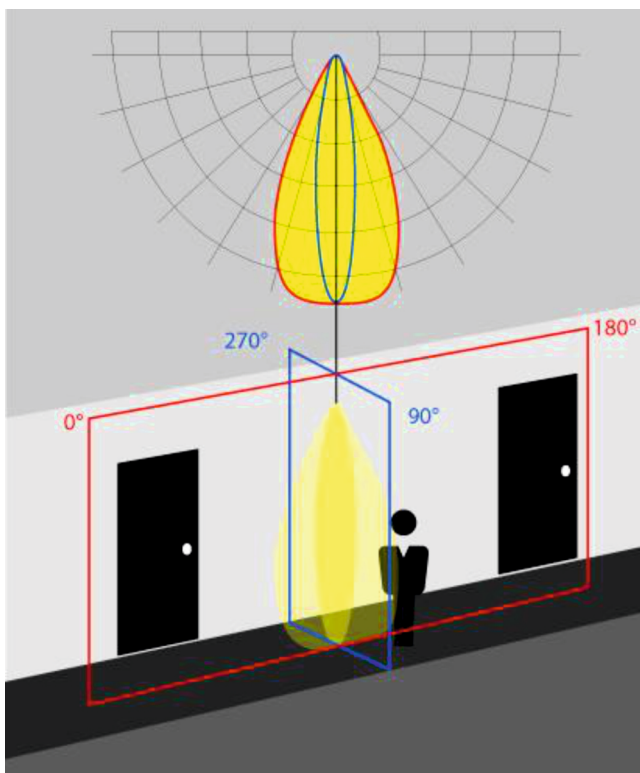
• SPECIAL BEAMS

• Street Light Beams

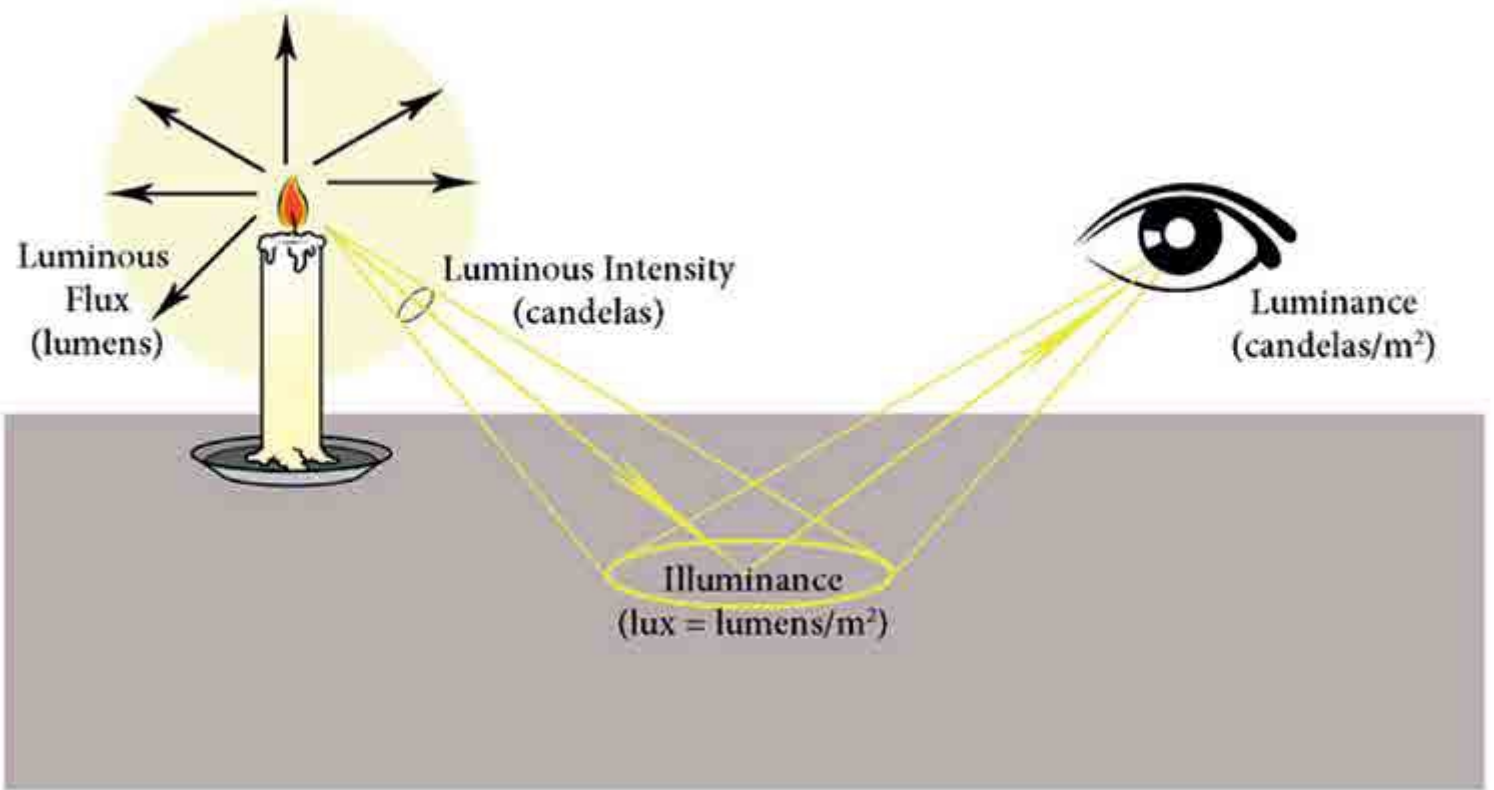
We use special lenses for street light, because beam angles of the street light need to be guided to specific direction to meet the requirement of the road, highways, multi-lane wide street, alleys.

LIGHT DISTRIBUTION CURVE

Light distribution curve is a visual representation of the light diffused by a luminaire. This graph tries to transpose a three dimensional concept (the light diffusion of a lamp or fixture in a space) onto a two dimensional medium.



MEASUREMENTS OF LIGHT



LUMINOUS FLUX (LUMENS-LM)

The luminous flux describes the quantity of light emitted by a light source.

Radiant flux is the measure of the total power of electromagnetic radiation (including infrared, ultra violet, and visible light), luminous flux describe the quantity derived from radiant flux (radiant power) by evaluating the radiation in accordance with the spectral sensitivity of the human eye. Without further specification, it refers to the initial luminous flux.

LUMINOUS EFFICACY (lm/w)

It is the ratio of the luminous flux to the electrical power consumed (lm/W). It is a measure of a light source's economic efficiency, and it indicates of how well a light source produces visible light.

LUMINOUS INTENSITY (CANDELA OR cd) $I = \frac{\Phi}{\Omega}$ Luminous flux / Solid angle

Means the total of the luminous flux leaving the source and propagated in the element of solid angle containing the given direction.

ILLUMINANCE (LUX) $E = \frac{\Phi}{A}$ Luminous flux / area (m²)

Illuminance means the quantity of light (luminous flux) hitting the surface A.

LUMINANCE (CD/M²) $L = \frac{I}{A_L \cdot \cos\epsilon}$ Luminous intensity / visible areas of light source $L = \frac{E \cdot \rho^*}{\pi}$ reflectance of area / Solid angle

It describes on one hand a light source's impression of brightness, and on the other hand a surface specific-ations, and therefore depends to a large extent on the degree of reflection.

FEATURE ICONS

COLOR TEMPERATURE TUNING



ADJUSTABLE ANGLES



COLOR RENDERING INDEX 80



ALUMINUM BODY



RED, GREEN, BLUE & WHITE COLOR MODEL



INGRESS PROTECTION 20 OR 54



INGRESS PROTECTION 67



INDOOR INSTALLATION



INSULATION CONTACT

Recessed Luminaires that have the IC rating Can have insulation up to the sides and covering them.



INSULATION CONTACT - FIRE RESISTANT

Recessed Luminaires that have the IC-Frating can have insulation abutted to and/or covering them. These down lights are also sealed so insulation cannot get into the fitting.



CYANOSIS OBSERVATION INDEX

Visual detection of cyanosis in a patient. For Hospital and medical tasks.



EASY TO INSTALL



DIMMABLE



LUMINAIRE SUITABLE FOR DIRECT MOUNTING ON NORMALLY FLAMMABLE SURFACES



ONLY SUITABLE FOR MOUNTING ON NON COMBUSTIBLE SURFACES.



IMPACT PROTECTION



APPROVAL ICONS

ILLUMINATING ENGINEERING SOCIETY CLASSIFICATION



THREE STEP MACADAM CHIPS



FIVE YEARS WARRANTY



GERMAN CONFORMITY



EUROPE CONFORMITY



RESTRICTION OF HAZARDOUS SUBSTANCES



QUALITY ASSURED FIRM ISO9001 CERTIFICATE



FEDERAL COMMUNICATIONS COMMISSION CERTIFICATE



REGULATORY COMPLIANCE MARK



CERTIFICATE BODY



SAUDI ARABIA CONFORMITY



APPLIANCE CLASS I



APPLIANCE CLASS II



APPLIANCE CLASS III



INDEX

DOWN LIGHTS

In this catalogue



AES0(28-29-30)

Noble IP20/44

Page 20



AES0(31-32-33)

Noble IP20/44

Page 22



AES0(34-35-36)

Noble IP20/44

Page 24



AES0(37-38-39)

Noble IP20/44

Page 26



AES1062

Rome A IP40

Page 32



AES20(19-23-27)

Rome A IP40

Page 34



AES20(18-22)A

Rome A IP40

Page 36



AES(R-MR)45

Rome Spot IP20/44

Page 38



AES(R-MR)55

Rome Spot IP20/44

Page 40



AES(R-MR)35

Rome Spot IP20/44

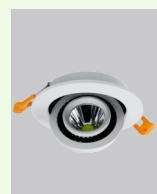
Page 42



AES10(73-74-75)

Rome V IP40

Page 46



AESCL1T

Rome B IP20

Page 48



AES5210

Rome B IP54

Page 52



AESDL1EC

Rome C IP20

Page 54



AESDLE

Rome C IP20

Page 56



AES229

Sunrise IP54

Page 58



AES230

Sunrise IP54

Page 60



AES231

Sunrise IP54

Page 62



AES232

Sunrise IP54

Page 64



AES250

Sunrise IP54

Page 66

PANEL LIGHTS



AESPL1

Panel IP20/54

Page XX

SURFACE MOUNTED



AESDLG1

Core IP20

Page XX



AESBL2

Core IP65

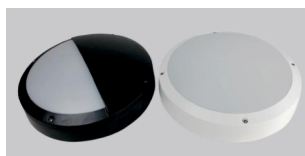
Page XX



AESTRL

Core IP20

Page XX



AESFCD1

Plus IP54

Page XX



AESCL1

Plus IP65

Page XX

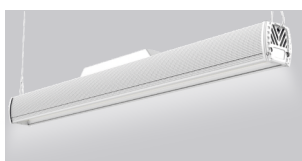
INDUSTRIAL LIGHTS



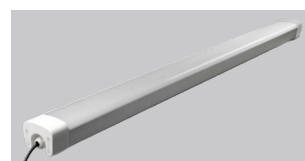
AESTP1
STAR
IP65
Page XX



AESTP2
Diamond
IP65
Page XX



AESTP3C
Linear
IP65
Page XX



AESUF1
Eco Tri
IP65
Page XX



AESFE
Eco Tri
IP65
Page XX



AESFV2
Eco Tri
IP65
Page XX

URBAN LIGHTS



AESLB1
Premium
IP66
Page XX



AESLB2
Premium
IP66
Page XX



AESHM3
Flood
IP65
Page XX



AESAP
Alpha
IP66
Page XX

Facade LIGHTS



AESWW(18-22)A
Classic
IP66
Page XX



AESW3(24-48)A
Classic
IP66
Page XX

DOWN LIGHTS

Down Lights are one of the most common types of lighting found in homes, offices, show rooms, stores, museums, etc..., with simple and elegant design.

Our offer includes wide beam family for general lighting and narrow beam families which come with wide choices of reflectors, frames and body textures. Brightness dimming is an available function for all types, and adjustable beams are also available in some narrow beam families.





Noble Family

IN NOBLE SERIES OF PRODUCTS, THE LAMP BODY ADOPTS SPLIT DESIGN AND COMPACT LAMP STRUCTURE, WHERE THE LAMP BODY AND THE FRAME IS EASY TO DISASSEMBLE AND INSTALL, THE FRAME CAN BE EMBEDDED INSTALLED.

THE EXQUISITE ELECTROPLATING SURFACE TREATMENT ART USING THE UNIQUE NANO DUSTPROOF TECHNOLOGY, MAKE IT WEAR-RESISTANT AND ANTI - HARD SCRATCHES.

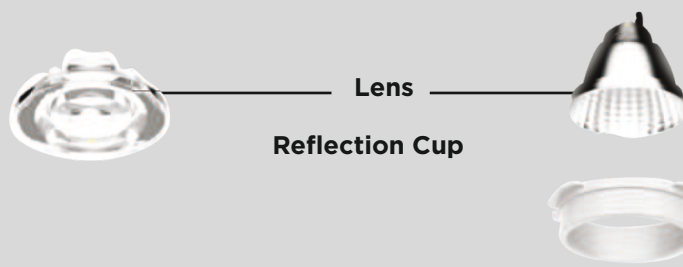
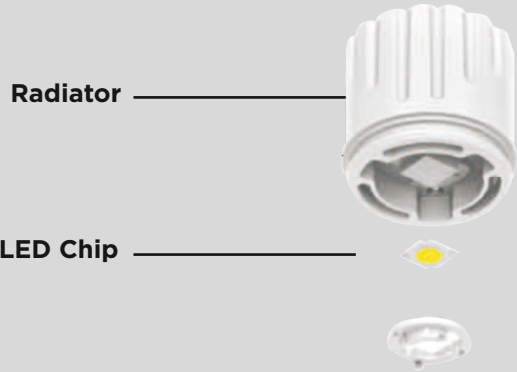
WITH THE PATENT OPTICAL LENS ZOOM DESIGN, THE FIXTURE CAN ACCURATELY TRANSFORM BEAM ANGLE TO 10°, 17°, 25° & 36 ° IN ANY TIME TO MEET THE LIGHTING REQUIREMENTS OF DIFFERENT SCENES AND OBJECT'S ILLUMINATION.

THE MULTIPLE DEEP ANTI-GLARE DESIGN, SHADING ANGLE GREATER THAN 30 DEGREES, CREATES A COMFORTABLE LIGHTING ENVIRONMENT, NOBLE SERIES CAN ALSO HAVE HIGH POWER OF SMALL-SIZE LAMP BODY, BREAK THROUGH THE BOTTLENECK OF SIMILAR PRODUCTS PERFORMANCE, WITH MORE CREATIVITY AND ADVANTAGES .









Decorative Cover



Frame without Border



NOBLE FAMILY



APPLICATION

Round and square ceiling- recessed down light for indoor installation, The exquisite electroplating surface treatment art using the unique Nano dust-proof technology, make it wear-resistant and anti - hard scratches., with the patent optical lens zoom design, the fixture can accurate transform beam angle to 10° ,17°, 25°, 36°, 60° to meet the lighting requirements. You can install it in public areas, stairways, corridors, foyers, shops, offices, etc. . .

APPROVALS & STANDARDS

Saudi Standard SASO 2902 *	Energy Efficiency, functionality & labeling requirements for lighting products -Part2-
IECEE certificate *	As per IEC60598-2-3:2002+A1:2011 IEC60598-1:2014+A1:2017
Power supply approval marks	UL/CSA/CE/ENEC/CCB/CCC
Degree of protection provided by enclosures, ingress protection(IP)	IEC 60529:2013

*: Approvals and certificate are under process.

TECHNICAL INFORMATION

FAMILY	NOBLE
Wattage	5W 10W 12W
CRI	80 90
CCT	2700K 3000K 3500K 4000K 5000K 5700K 6500K
Beam	10° 17° 25° 36° 60°
Lumen	451.5lm 645.1lm 774lm
Finish	Black White
Material	Die-casting aluminum body and heatsink, PMMA lenes
Driver	Tridonic Philips Lifud



shine black



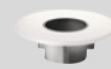
gold



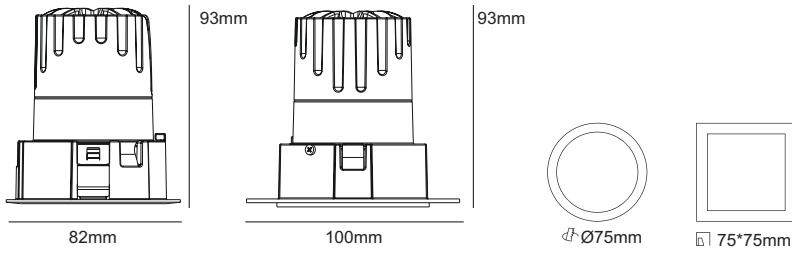
silver



matt black

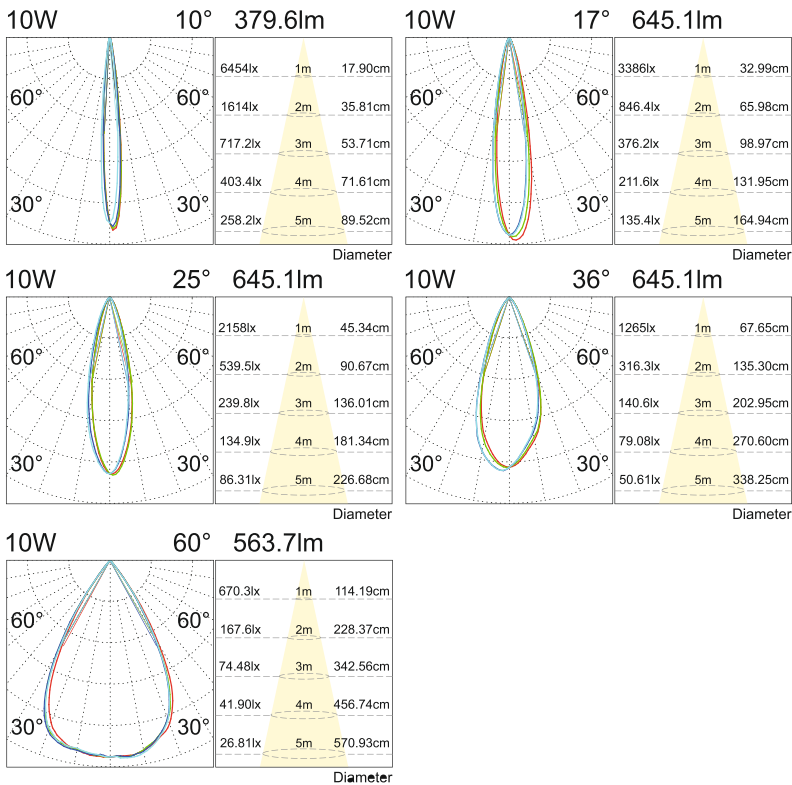


CUTOUT & DIMENSION



MODEL	POWER	DIMENSION	CUT HOLE
AES0285W-R	5W	Ø82mm * H93mm	Ø75mm
AES0285W-S	5W	L100mm*W100mm*H93mm	75*75mm
AES02910W-R	10W	Ø82mm * H93mm	Ø75mm
AES02910W-S	10W	L100mm*W100mm*H93mm	75*75mm
AES03012W-R	12W	Ø82mm * H93mm	Ø75mm
AES03012W-S	12W	L100mm*W100mm*H93mm	75*75mm

LIGHT DISTRIBUTION DIAGRAM



ORDERING INFORMATION

EXAMPLE : AES028-10W-80-30-20-R-SB-25-PH-ND

Model	Wattage	CRI	CCT	IP	Frame	Reflector	Beam	DriverType	Dimming
AES028	10W	80	30	20	R	SB	25°	Ph	ND
AES028	5W	80	27 2700K	20	R Round	SB shine Black	10°	Tr Tridonic	ND Non Dim
AES029	10W	90	30 3000K	44	S Square	G Gold	17°	Ph Philips	TD Triac Dim
AES030	12W		35 3500K			RS Silver	25°	Lf Lifud	VD 0/1-10VDim
			40 4000K			MB MatteBlack	36°		DA DALI Dim
			50 5000K				60°		
			57 5700K						
			65 6500K						





NOBLE FAMILY



APPLICATION

Round and square ceiling- recessed down light for indoor installation, The exquisite electroplating surface treatment art using the unique Nano dust-proof technology, make it wear-resistant and anti - hard scratches., with the patent optical lens zoom design, the fixture can accurate transform beam angle to 17°, 25°, 36°, 60° to meet the lighting requirements. You can install it in public areas, stairways, corridors, foyers, shops, offices, etc. . . .

APPROVALS & STANDARDS

Saudi Standard SASO 2902 *	Energy Efficiency, functionality & labeling requirements for lighting products -Part2-
IECEE certificate *	As per IEC60598-2-3:2002+A1:2011 IEC60598-1:2014+A1:2017
Power supply approval marks	UL/CSA/CE/ENEC/CCB/CCC
Degree of protection provided by enclosures, ingress protection(IP)	IEC 60529:2013

*: Approvals and certificate are under process.

TECHNICAL INFORMATION

FAMILY	NOBLE
Wattage	15W 18W 20W
CRI	80 90
CCT	2700K 3000K 3500K 4000K 5000K 5700K 6500K
Beam	17° 25° 36° 60°
Lumen	975lm 1170.0lm 1300.0lm
Finish	Black White
Material	Die-casting aluminum body and heatsink, PMMA lenes
Driver	Tridonic Philips Lifud



shine black



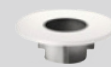
gold



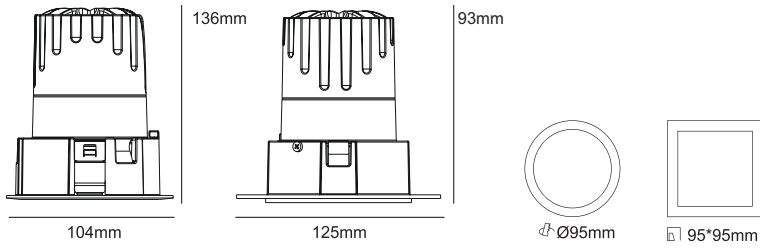
silver



matt black



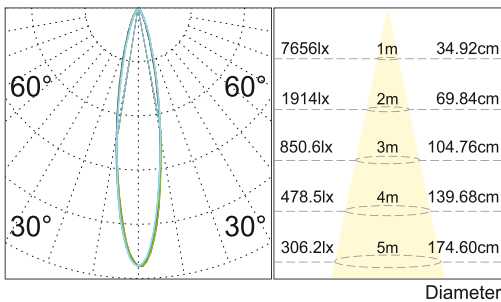
CUTOUT & DIMENSION



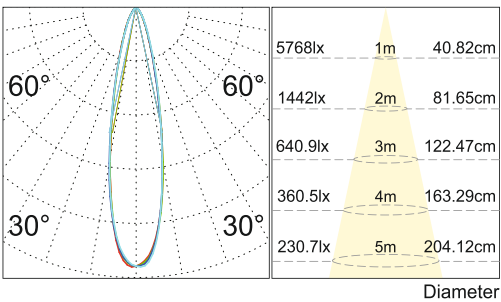
MODEL	POWER	DIMENSION	CUT HOLE
AES03115W-R	15W	Ø104mm * H136mm	Ø95mm
AES03115W-S	15W	L125mm*W125mm*H93mm	95*95mm
AES03218W-R	18W	Ø104mm * H136mm	Ø95mm
AES03218W-S	18W	L125mm*W125mm*H93mm	95*95mm
AES03320W-R	20W	Ø104mm * H136mm	Ø95mm
AES03320W-S	20W	L125mm*W125mm*H93mm	95*95mm

LIGHT DISTRIBUTION DIAGRAM

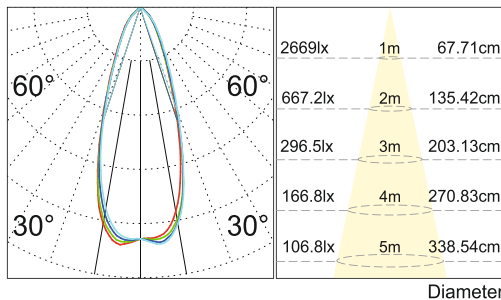
20W 17° 1200.0lm



20W 25° 1300.0lm



20W 36° 1300.0lm



ORDERING INFORMATION

EXAMPLE : AES032-18W-80-30-20-R-SB-25-PH-ND

Model	Wattage	CRI	CCT	IP	Frame	Reflector	Beam	DriverType	Dimming
AES032	18W	80	30	20	R	SB	25°	Ph	ND
AES031	15W	80	27 2700K	20	R Round	SB shine Black	17°	Tr Tridonic	ND Non Dim
AES032	18W	90	30 3000K	44	S Square	G Gold	25°	Ph Philips	TD Triac Dim
AES033	20W		35 3500K			RS Silver	36°	Lf Lifud	VD 0/1-10VDim
			40 4000K			MB MatteBlack	60°		DA DALI Dim
			50 5000K						
			57 5700K						
			65 6500K						





NOBLE FAMILY



APPLICATION

Round and square ceiling- recessed down light for indoor installation, The exquisite electroplating surface treatment art using the unique Nano dust-proof technology, make it wear-resistant and anti - hard scratches., with the patent optical lens zoom design, the fixture can accurate transform beam angle to 17°, 25°, 36°, 60° to meet the lighting requirements. You can install it in public areas, stairways, corridors, foyers, shops, offices, etc. . . .

APPROVALS & STANDARDS

Saudi Standard SASO 2902 *	Energy Efficiency, functionality & labeling requirements for lighting products -Part2-
IECEE certificate *	As per IEC60598-2-3:2002+A1:2011 IEC60598-1:2014+A1:2017
Power supply approval marks	UL/CSA/CE/ENEC/CCB/CCC
Degree of protection provided by enclosures, ingress protection(IP)	IEC 60529:2013

*: Approvals and certificate are under process.

TECHNICAL INFORMATION

FAMILY	NOBLE
Wattage	20W 25W
CRI	80 90
CCT	2700K 3000K 3500K 4000K 5000K 5700K 6500K
Beam	17° 25° 36° 60°
Lumen	1360.0lm 1700.0lm
Finish	Black White
Material	Die-casting aluminum body and heatsink, PMMA lenes
Driver	Tridonic Philips Lifud



shine black



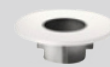
gold



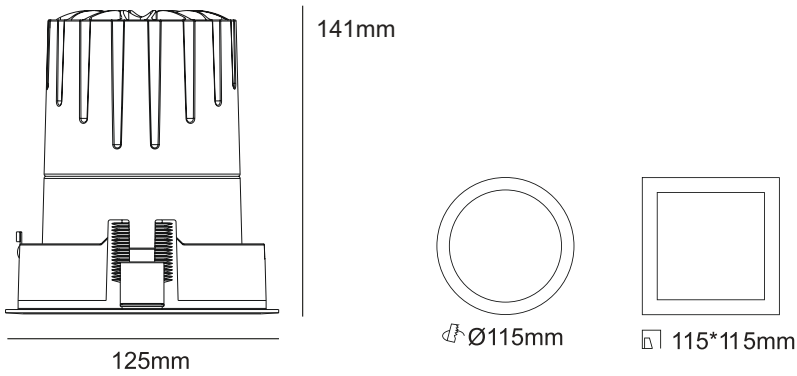
silver



matt black

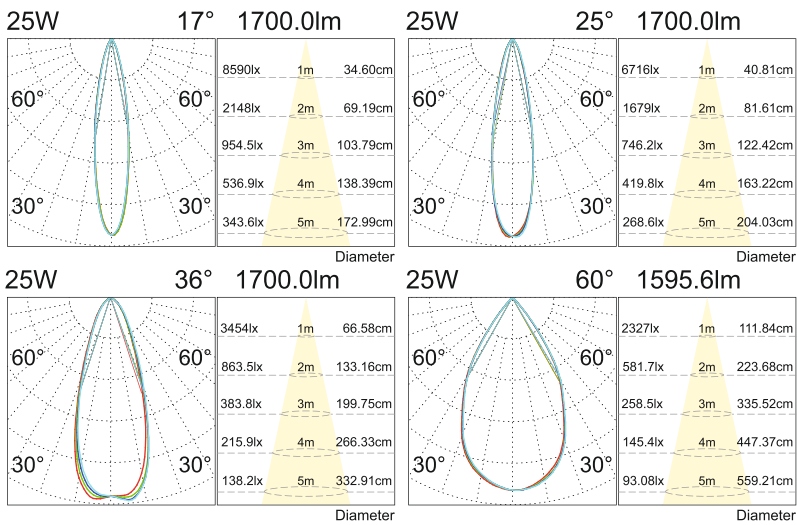


CUTOUT & DIMENSION



MODEL	POWER	DIMENSION	CUT HOLE
AES03420W-R	20W	Ø125mm * H141mm	Ø115mm
AES03420W-S	20W	L125mm*W125mm*H141mm	115*115mm
AES03525W-R	25W	Ø125mm * H141mm	Ø115mm
AES03525W-S	25W	L125mm*W125mm*H141mm	115*115mm

LIGHT DISTRIBUTION DIAGRAM



ORDERING INFORMATION

EXAMPLE : AES035-25W-80-30-20-R-SB-25-PH-ND

Model	Wattage	CRI	CCT	IP	Frame	Reflector	Beam	DriverType	Dimming
AES035	25W	80	30	20	R	SB	25°	Ph	ND
AES034	20W	80	27 2700K	20	R Round	SB shine Black	17°	Tr Tridonic	ND Non Dim
AES035	25W	90	30 3000K	44	S Square	G Gold	25°	Ph Philips	TD Triac Dim
			35 3500K			RS Silver	36°	Lf Lifud	VD 0/1-10VDim
			40 4000K			MB MatteBlack	60°		DA DALI Dim
			50 5000K						
			57 5700K						
			65 6500K						





NOBLE FAMILY



APPLICATION

Round and square ceiling- recessed down light for indoor installation, The exquisite electroplating surface treatment art using the unique Nano dust-proof technology, make it wear-resistant and anti - hard scratches., with the patent optical lens zoom design, the fixture can accurate transform beam angle to 17°, 25°, 36°, 45°, 60° to meet the lighting requirements. You can install it in public areas, stairways, corridors, foyers, shops, offices, etc. . .

APPROVALS & STANDARDS

Saudi Standard SASO 2902 *	Energy Efficiency, functionality & labeling requirements for lighting products -Part2-
IECEE certificate *	As per IEC60598-2-3:2002+A1:2011 IEC60598-1:2014+A1:2017
Power supply approval marks	UL/CSA/CE/ENEC/CCB/CCC
Degree of protection provided by enclosures, ingress protection(IP)	IEC 60529:2013

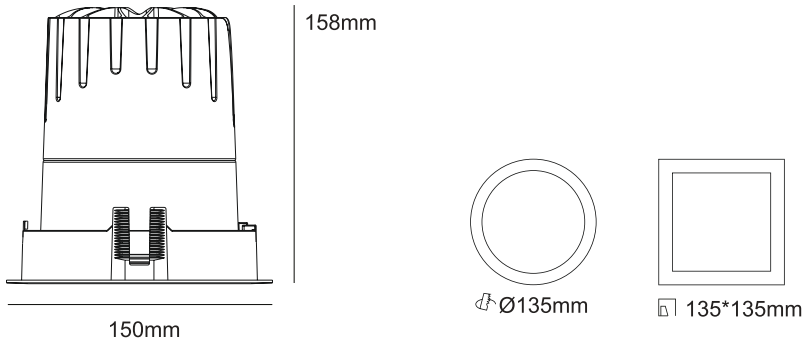
*: Approvals and certificate are under process.

TECHNICAL INFORMATION

FAMILY	NOBLE
Wattage	30W 40W 50W
CRI	80 90
CCT	2700K 3000K 3500K 4000K 5000K 5700K 6500K
Beam	17° 25° 36° 45° 60°
Lumen	2100.0lm 2800.0lm 3500.0lm
Finish	Black White
Material	Die-casting aluminum body and heatsink, PMMA lenes
Driver	Tridonic Philips Lifud

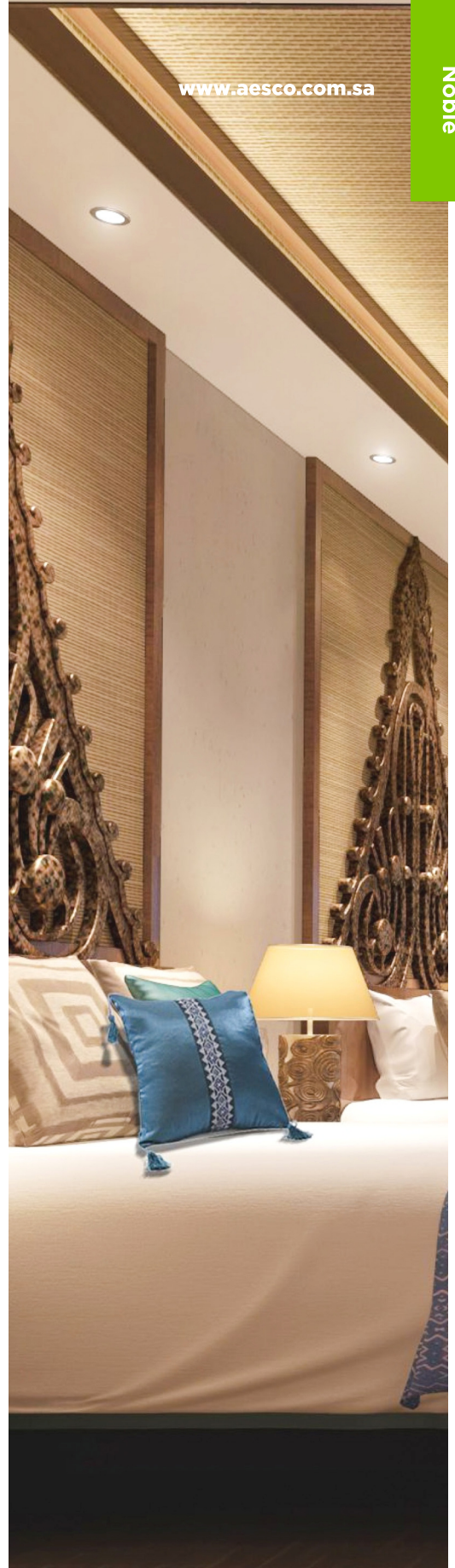
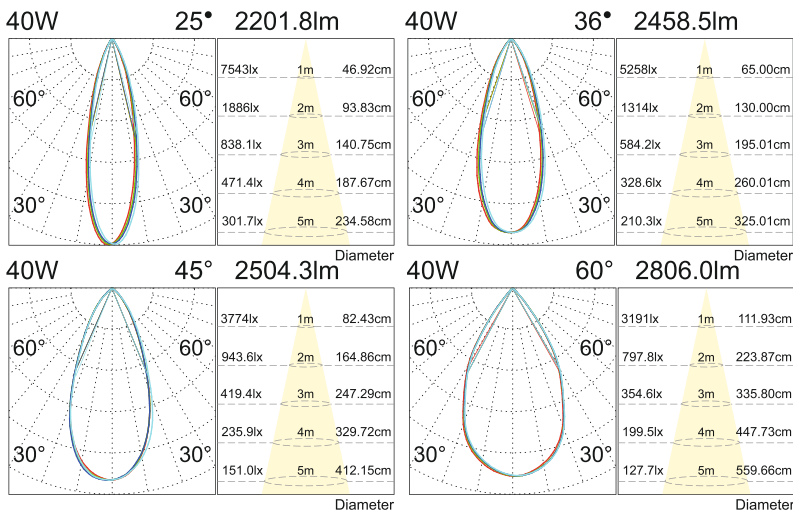


CUTOUT & DIMENSION



MODEL	POWER	DIMENSION	CUT HOLE
AES03730W-R	30W	Ø150mm * H158mm	Ø135mm
AES03730W-S	30W	L150mm*W150mm*H158mm	135*135mm
AES03840W-R	40W	Ø150mm * H158mm	Ø135mm
AES03840W-S	40W	L150mm*W150mm*H158mm	135*135mm
AES03840W-R	50W	Ø150mm * H158mm	Ø135mm
AES03840W-S	50W	L150mm*W150mm*H158mm	135*135mm

LIGHT DISTRIBUTION DIAGRAM



ORDERING INFORMATION

EXAMPLE : AES038-40W-80-30-20-R-SB-25-PH-ND

Model	Wattage	CRI	CCT	IP	Frame	Reflector	Beam	DriverType	Dimming
AES038	40W	80	30	20	R	SB	25°	Ph	ND
AES037	30W	80	27 2700K	20	R Round	SB shine Black	17°	Tr Tridonic	ND Non Dim
AES038	40W	90	30 3000K	44	S Square	G Gold	25°	Ph Philips	TD Triac Dim
AES039	50W		35 3500K			RS Silver	36°	Lf Lifud	VD 0/1-10VDim
			40 4000K			MB MatteBlack	45°		DA DALI Dim
			50 5000K				60°		
			57 5700K						
			65 6500K						

ROME FAMILY







ROME A

TO MEET DIFFERENT REQUIREMENT OF LIGHTING THE DEVICE IS 360° ROTATABLE AND ALSO ADJUSTABLE. ANTI-GLARE & FOCUS LIGHT DESIGN, SPECIALIZED FOR FURNITURE STORES AS WELL AS EXCLUSIVE SHOP. ROUND & SQUARE SHAPE WITH ALL WATTAGE SERIES INCLUDED TO MEET THE DIFFERENT DESIGN REQUIREMENT.







DOWN LIGHT

ROME A FAMILY



APPLICATION

Round ceiling-recessed down light for indoor installation, 360° rotatable, the fixture can accurately transform beam angle to 10°, 23°, and 38° to meet the lighting requirements. You can install it for public areas, stairways, corridors, foyers, shops, offices, etc....

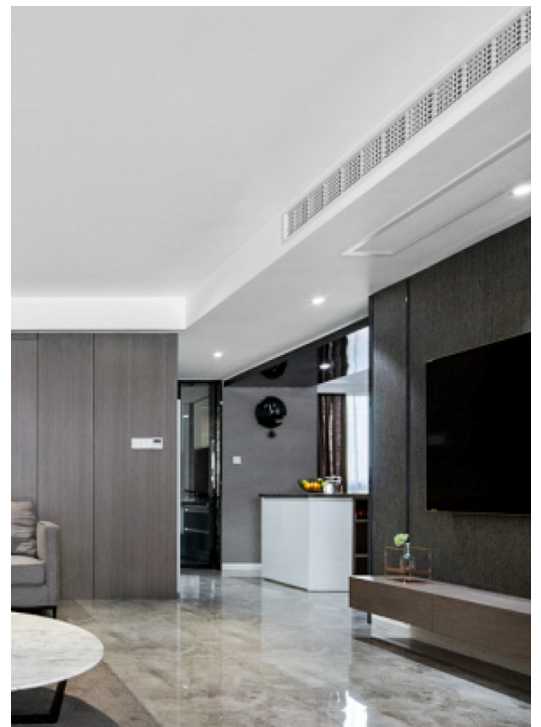
APPROVALS & STANDARDS

Saudi Standard SASO 2902 *	Energy Efficiency, functionality & labeling requirements for lighting products -Part2-
IECEE certificate *	As per IEC60598-2-3:2002+A1:2011 IEC60598-1:2014+A1:2017
Power supply approval marks	UL/CSA/CE/ENEC/CCB/CCC
Degree of protection provided by enclosures, ingress protection(IP)	IEC 60529:2013

*: Approvals and certificate are under process.

TECHNICAL INFORMATION

FAMILY	ROME A
Wattage	13W 20W 30W
CRI	70 80 90
CCT	2700K 3000K 3500K 4000K 5000K 5700K 6500K
Beam	10° 23° 38°
Lumen	13W (910.0lm - 1105.0lm) 20W(1400.0lm - 1650.0lm) 30W (2100.0lm - 2450.0lm)
Finish	Black White silver
Material	Die-casting aluminum body and heatsink, PMMA lenes
Driver	Tridonic Philips Lifud



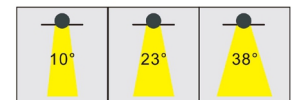
CREE

CITILED
The Light Engine

NICHIA

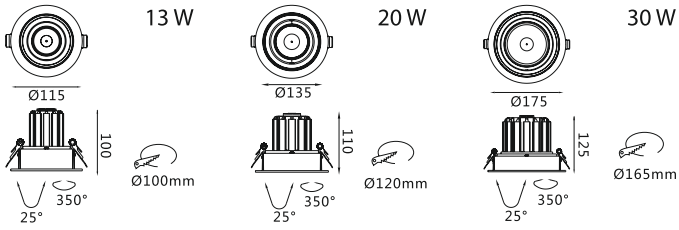
TRIDONIC

Beam angle



CUTOUT & DIMENSION

www.aesco.com.sa



MODEL	POWER
AES1062-R	13W
AES1062-R	20W
AES1062-R	30W
DIMENSION	CUT HOLE
Ø 115mm * H100mm	Ø100mm
Ø 135mm * H110mm	Ø120mm
Ø 175mm * H125mm	Ø165mm



ORDERING INFORMATION

EXAMPLE : AES1062-13W-80-30-B-23-PH-ND

Model	Wattage	CRI	CCT	FrameColor	Beam	DriverType	Dimming
AES1062	13W	80	30	B	23°	Ph	ND
AES1062	13W	80	27 2700K	B Black	10°	Tr Tridonic	ND Non Dim
	20W	90	30 3000K	W White	23°	Ph Philips	TD Triac Dim
	30W		35 3500K	R Silver	38°	Lf Lifud	VD 0/1-10VDim
			40 4000K				DA DALI Dim
			50 5000K				
			57 5700K				
			65 6500K				



DOWN LIGHT

ROME A FAMILY



APPLICATION

Square ceiling-recessed down light for indoor installation, 360° rotatable, the fixture can accurately transform beam angle to 10°, 23°, and 38° to meet the lighting requirements. You can install it for public areas, stairways, corridors, foyers, shops, offices, etc....

APPROVALS & STANDARDS

Saudi Standard SASO 2902 *	Energy Efficiency, functionality & labeling requirements for lighting products -Part2- As per IEC60598-2-3:2002+A1:2011 IEC60598-1:2014+A1:2017
IECEE certificate *	UL/CSA/CE/ENEC/CCB/CCC
Power supply approval marks	IEC 60529:2013
Degree of protection provided by enclosures, ingress protection(IP)	

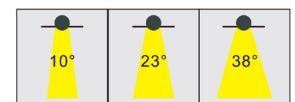
*: Approvals and certificate are under process.

TECHNICAL INFORMATION

FAMILY	ROME A
Wattage	13W 15W 35W
CRI	70 80 90
CCT	2700K 3000K 3500K 4000K 5000K 5700K 6500K
Beam	10° 23° 38°
Lumen	13W (910.0lm - 1105.0lm) 15W(1050.0lm - 1320.0lm) 35W (2450.0lm - 3360.0lm)
Finish	Black White silver
Material	Die-casting aluminum body and heatsink, PMMA lenes
Driver	Tridonic Philips Lifud

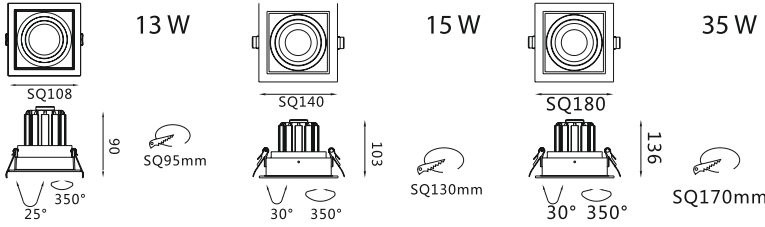


Beam angle



CUTOUT & DIMENSION

www.aesco.com.sa



MODEL	POWER
AES2027A-13W	13W
AES2023A-15W	15W
AES2019A-35W	35W
DIMENSION	CUT HOLE
L108mm*W108mm*H90mm	95*95mm
L140mm*W140mm*H103mm	130*130mm
L180mm*W180mm*H136mm	170*170mm



ORDERING INFORMATION

EXAMPLE : AES2027A-13W-80-30-B-23-PH-ND

Model	Wattage	CRI	CCT	FrameColor	Beam	DriverType	Dimming
AES2027A	13W	80	30	B	23°	Ph	ND
AES2027A	13W	80	27 2700K	B Black	10°	Tr Tridonic	ND Non Dim
AES2023A	15W	90	30 3000K	W White	23°	Ph Philips	TD Triac Dim
AES2019A	35W		35 3500K	R Silver	38°	Lf Lifud	VD 0/1-10VDim
			40 4000K				DA DALI Dim
			50 5000K				
			57 5700K				
			65 6500K				



DOWN LIGHT

ROME A FAMILY



APPLICATION

Recessed Grille down light with quality aluminum body in powder-coated, with multiple reflecting angle, excellent heatsink capability to minimize degradation of the lumens . You can install it in star hotel, stairways, museum, corridors, foyers, shopping malls, stores, offices, etc. . . .

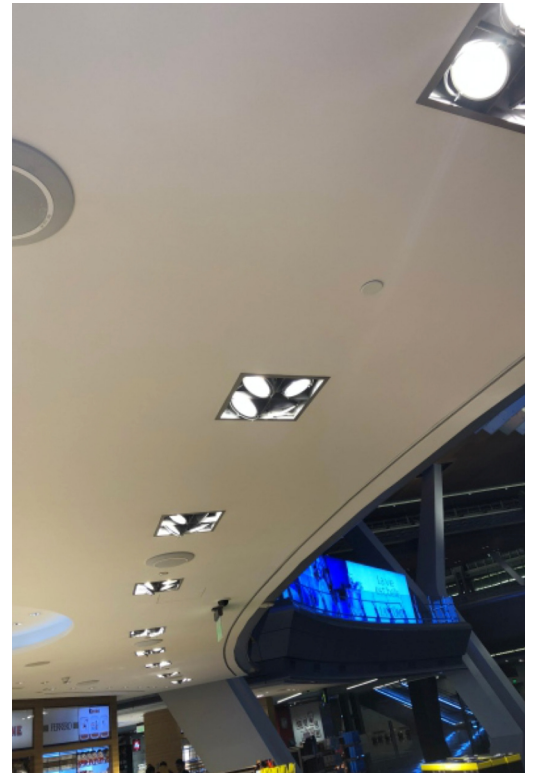
APPROVALS & STANDARDS

Saudi Standard SASO 2902 *	Energy Efficiency, functionality & labeling requirements for lighting products -Part2-
IECEE certificate *	As per IEC60598-2-3:2002+A1:2011 IEC60598-1:2014+A1:2017
Power supply approval marks	UL/CSA/CE/ENEC/CCB/CCC
Degree of protection provided by enclosures, ingress protection(IP)	IEC 60529:2013

*: Approvals and certificate are under process.

TECHNICAL INFORMATION

FAMILY	ROME A
Wattage	2*15W 2*35W
CRI	70 80 90
CCT	2700K 3000K 3500K 4000K 5000K 5700K 6500K
Beam	10° 23° 38°
Lumen	2*15W (2100.0lm - 2640.0lm) 2*35W(4915.0lm - 6720.0lm)
Finish	Black White silver
Material	Die-casting aluminum body and heatsink, PMMA lenes
Driver	Tridonic Philips Lifud



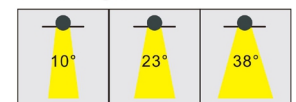
CREE

CITILED
The Light Engine

NICHIA

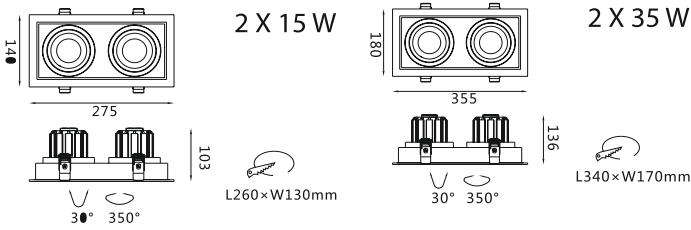
TRIDONIC

Beam angle



CUTOUT & DIMENSION

www.aesco.com.sa



MODEL	POWER
AES2022A-15	2 X 15W
AES2022A-35	2 X 35W

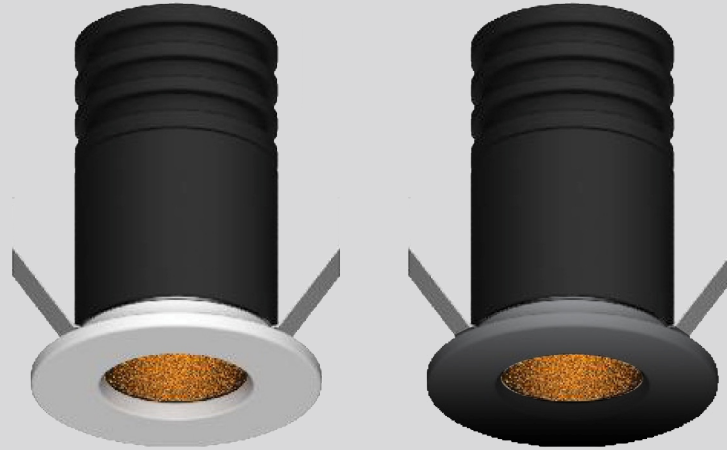
DIMENSION	CUT HOLE
L275mm*W140mm*H103mm	260*130mm
L355mm*W180mm*H136mm	340*170mm



ORDERING INFORMATION

EXAMPLE : AES2022A-2*15W-80-30-B-23-PH-ND

Model	Wattage	CRI	CCT	FrameColor	Beam	DriverType	Dimming
AES2022A	2*15W	80	30	B	23°	Ph	ND
AES2022A	2*15W	80	27 2700K	B Black	10°	Tr Tridonic	ND Non Dim
AES2018A	2*35W	90	30 3000K	W White	23°	Ph Philips	TD Triac Dim
			35 3500K	R Silver	38°	Lf Lifud	VD 0/1-10VDim
			40 4000K				DA DALI Dim
			50 5000K				
			57 5700K				
			65 6500K				



DOWN LIGHT

ROME SPOT FAMILY



APPLICATION

Elegant, compact, and simple design to illuminate your space quietly and clearly, the fixture can accurately transform beam angle to 10° only to meet the lighting requirements. You can install it in home, bedrooms, public areas, stairways, corridors, foyers, shops, offices, etc. . . .

APPROVALS & STANDARDS

Saudi Standard SASO 2902 *	Energy Efficiency, functionality & labeling requirements for lighting products -Part2-
IECEE certificate *	As per IEC60598-2-3:2002+A1:2011 IEC60598-1:2014+A1:2017
Power supply approval marks	UL/CSA/CE/ENEC/CCB/CCC
Degree of protection provided by enclosures, ingress protection(IP)	IEC 60529:2013

*: Approvals and certificate are under process.

TECHNICAL INFORMATION

FAMILY	ROME SPOT
Wattage	3W
CRI	90
CCT	2700K 3000K 3500K 4000K 5000K 5700K 6500K
Beam	10°
Finish	silver
Material	Die-casting aluminum body and heatsink, PMMA lenses
Driver	Tridonic Philips Lifud



CREE

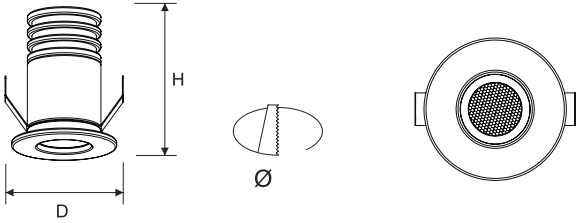
CITILED
The Light Engine

NICHIA

TRIDONIC



CUTOUT & DIMENSION



MODEL	POWER
AES-R35 (Fixed)	3W
AES-MR35 (Adjustable)	3W

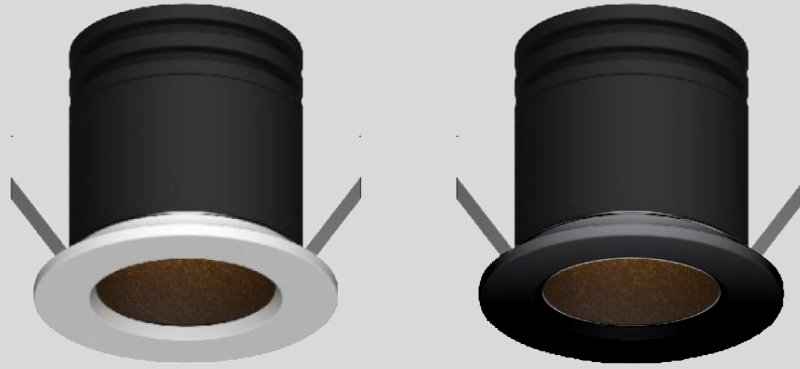
DIMENSION	CUT HOLE
Ø 35mm * H45mm	Ø30mm
Ø 35mm * H47mm	Ø30mm



ORDERING INFORMATION

EXAMPLE : AES-R35-3W-90-30-S-PH-ND

Model	Wattage	CRI	CCT	IP	FrameColor	DriverType	Dimming
AES-R35	3W	90	30	20	S	Ph	ND
AES-R35	3W	80	27 2700K	20	S Silver	Tr Tridonic	ND Non Dim
AES-MR35		90	30 3000K	44		Ph Philips	TD Triac Dim
			35 3500K			Lf Lifud	VD 0/1-10VDim
			40 4000K				DA DALI Dim
			50 5000K				
			57 5700K				
			65 6500K				



DOWN LIGHT

ROME SPOT FAMILY



APPLICATION

Elegant, compact, and simple design to illuminate your space quietly and clearly, the fixture can accurately transform beam angle to 8°, 24° to meet the lighting requirements. You can install it in home, bedrooms, public areas, stairways, corridors, foyers, shops, offices, etc. . . .

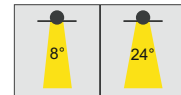
APPROVALS & STANDARDS

Saudi Standard SASO 2902 *	Energy Efficiency, functionality & labeling requirements for lighting products -Part2-
IECEE certificate *	As per IEC60598-2-3:2002+A1:2011 IEC60598-1:2014+A1:2017
Power supply approval marks	UL/CSA/CE/ENEC/CCB/CCC
Degree of protection provided by enclosures, ingress protection(IP)	IEC 60529:2013

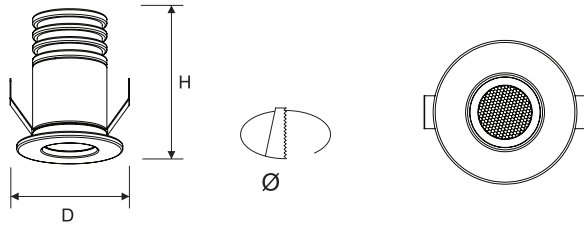
*: Approvals and certificate are under process.

TECHNICAL INFORMATION

FAMILY	ROME SPOT
Wattage	3W
CRI	90
CCT	2700K 3000K 3500K 4000K 5000K 5700K 6500K
Beam	8° 24°
Finish	silver
Material	Die-casting aluminum body and heatsink, PMMA lenes
Driver	Tridonic Philips Lifud



CUTOUT & DIMENSION



www.aesco.com.sa

MODEL	POWER
AES-R45 (Fixed)	3W
AES-MR45 (Adjustable)	3W

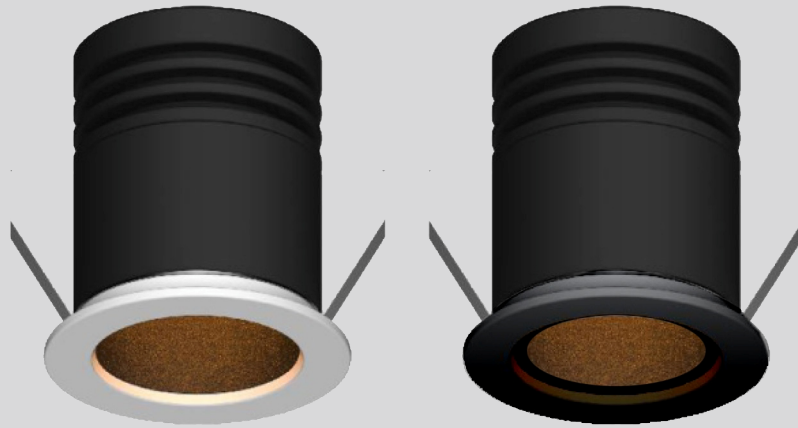
DIMENSION	CUT HOLE
Ø 45mm * H45mm	Ø40mm
Ø 45mm * H47mm	Ø40mm



ORDERING INFORMATION

EXAMPLE : AES-R45-3W-90-30-S-8-PH-ND

Model	Wattage	CRI	CCT	IP	FrameColor	Beam	DriverType	Dimming
AES-R45	3W	90	30	20	S	8°	Ph	ND
AES-R45	3W	80	27 2700K	20	S Silver	8°	Tr Tridonic	ND Non Dim
AES-MR45		90	30 3000K	44		24°	Ph Phillips	TD Triac Dim
			35 3500K				Lf Lifud	VD 0/1-10VDim
			40 4000K					DA DALI Dim
			50 5000K					
			57 5700K					
			65 6500K					



DOWN LIGHT

ROME SPOT FAMILY



APPLICATION

Elegant, compact, and simple design to illuminate your space quietly and clearly, the fixture can accurately transform beam angle to 15°, 24° to meet the lighting requirements. You can install it in home, bedrooms, public areas, stairways, corridors, foyers, shops, offices, etc. . . .

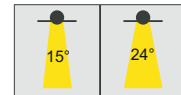
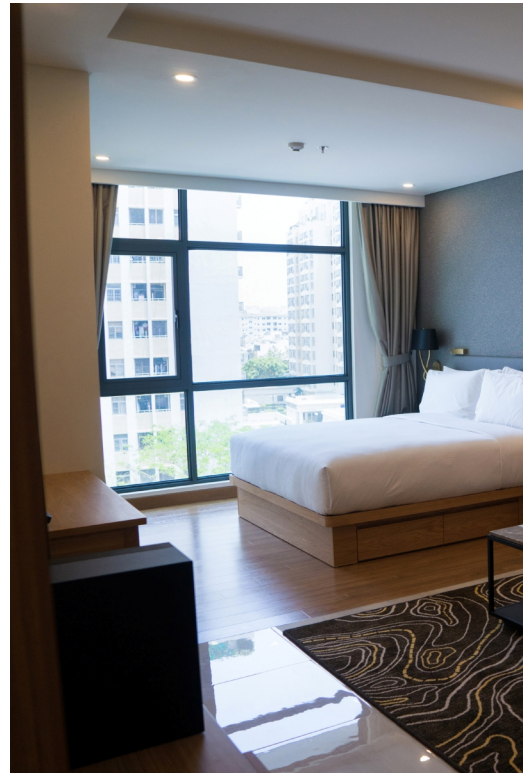
APPROVALS & STANDARDS

Saudi Standard SASO 2902 *	Energy Efficiency, functionality & labeling requirements for lighting products -Part2-
IECEE certificate *	As per IEC60598-2-3:2002+A1:2011 IEC60598-1:2014+A1:2017
Power supply approval marks	UL/CSA/CE/ENEC/CCB/CCC
Degree of protection provided by enclosures, ingress protection(IP)	IEC 60529:2013

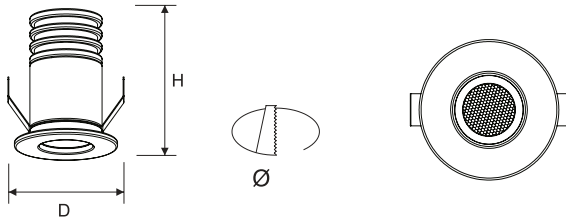
*: Approvals and certificate are under process.

TECHNICAL INFORMATION

FAMILY	ROME SPOT
Wattage	7W
CRI	90
CCT	2700K 3000K 3500K 4000K 5000K 5700K 6500K
Beam	15° 24°
Finish	silver
Material	Die-casting aluminum body and heatsink, PMMA lenes
Driver	Tridonic Philips Lifud



CUTOUT & DIMENSION



MODEL	POWER
AES-R55 (Fixed)	7W
AES-MR55 (Adjustable)	7W

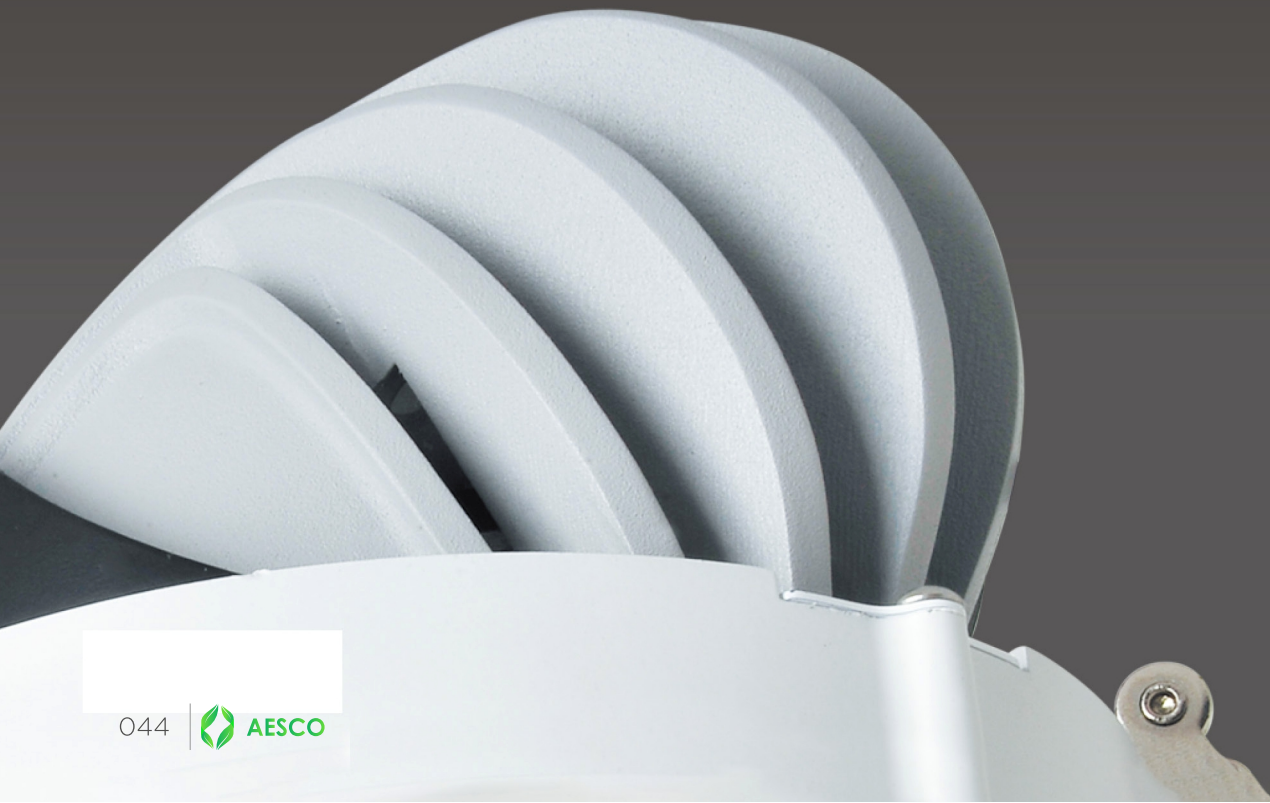
DIMENSION	CUT HOLE
Ø 55mm * H60mm	Ø50mm
Ø 55mm * H60mm	Ø50mm



ORDERING INFORMATION

EXAMPLE : AES-R45-7W-90-30-R-S-15-PH-ND

Model	Wattage	CRI	CCT	IP	FrameColor	Beam	DriverType	Dimming
AES-R55	7W	90	30	20	S	15°	Ph	ND
AES-R55	7W	80	27 2700K	20	S Silver	15°	Tr Tridonic	ND Non Dim
AES-MR55		90	30 3000K	44		24°	Ph Philips	TD Triac Dim
			35 3500K				Lf Lifud	VD 0/1-10VDim
			40 4000K					DA DALI Dim
			50 5000K					
			57 5700K					
			65 6500K					





Recessed LED adjustable spot light with high purity molding, excellent and life-guaranteed heat sink design, 360° horizontally 45° tilt provides flexible projection demand .

Application: fashion shop, jewelry display and other high end accent lighting areas.





ADJ. DOWN LIGHT

ROME V FAMILY



APPLICATION

Round ceiling- recessed down light for indoor installation, 360° horizontally 45° tilt provides flexible projection demand, the fixture can accurately transform beam angle to 15°, 24°, 38° & 50° to meet the lighting requirements. You can install it in fashion shop, jewelry display and other high end accent lighting areas.

APPROVALS & STANDARDS

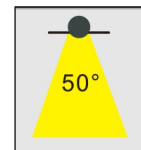
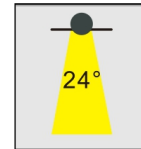
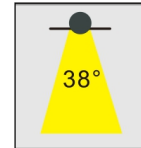
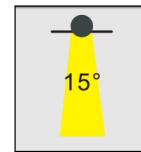
Saudi Standard SASO 2902 *	Energy Efficiency, functionality & labeling requirements for lighting products -Part2-
IECEE certificate *	As per IEC60598-2-3:2002+A1:2011 IEC60598-1:2014+A1:2017
Power supply approval marks	UL/CSA/CE/ENEC/CCB/CCC
Degree of protection provided by enclosures, ingress protection(IP)	IEC 60529:2013

*: Approvals and certificate are under process.

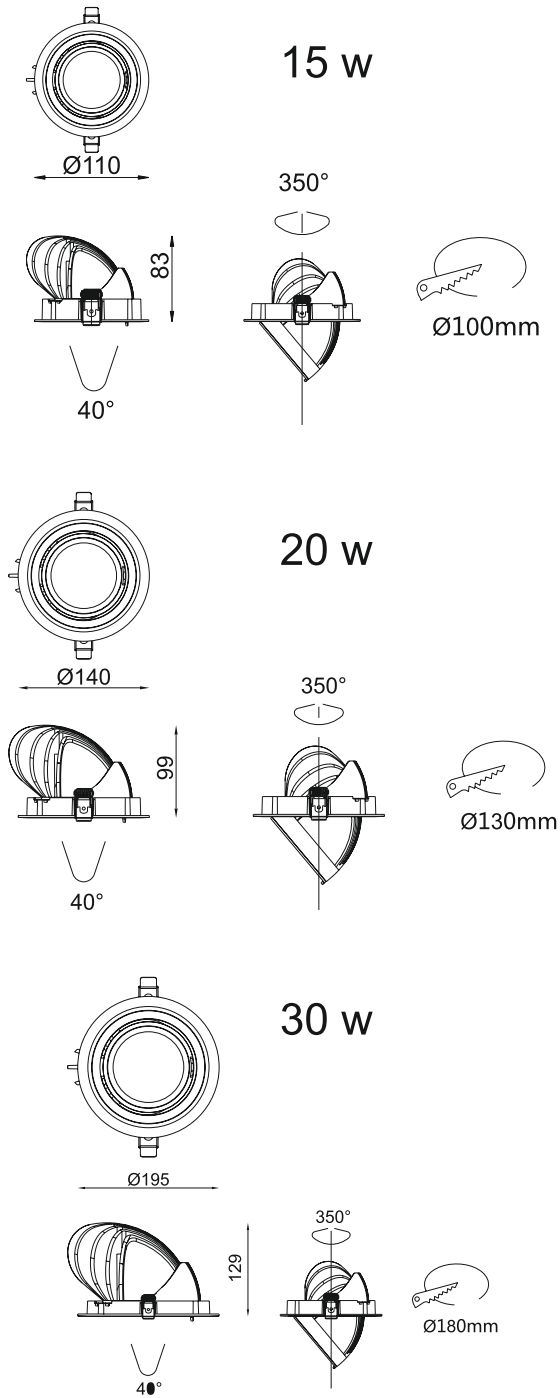
TECHNICAL INFORMATION

FAMILY	ROME V
Wattage	15W 20W 30W
CRI	70 80 90
CCT	2700K 3000K 3500K 4000K 5000K 5700K 6500K
Beam	15° 24° 38° 50°
Lumen	15W(1050.0lm - 1550.0lm) 20W(1405lm - 2100lm) 30W(2107lm - 2943lm)
Finish	Black White silver
Material	Die-casting aluminum body and heatsink, PMMA lenes
Driver	Tridonic Philips Lifud

Beam angle



CUTOUT & DIMENSION



MODEL	POWER	DIMENSION	CUT HOLE
AES1073	15W	Ø 110mm * H83mm	Ø100mm
AES1074	20W	Ø 140mm * H99mm	Ø130mm
AES1075	30W	Ø 195mm * H129mm	Ø180mm

ORDERING INFORMATION

EXAMPLE : AES1074-20W-80-30-B-24-PH-ND

Model	Wattage	CRI	CCT	FrameColor	Beam	DriverType	Dimming
AES1074	20W	80	30	B	24°	Ph	ND
AES1073	15W	80	27 2700K	B Black	15°	Tr Tridonic	ND Non Dim
AES1074	20W	90	30 3000K	W White	24°	Ph Philips	TD Triac Dim
AES1075	30W		35 3500K	R Silver	38°	Lf Lifud	VD 0/1-10VDim
			40 4000K		50°		DA DALI Dim
			50 5000K				
			57 5700K				
			65 6500K				





ADJ. DOWN LIGHT ROME V FAMILY



APPLICATION

Adjustable recessed LED down light with high quality aluminum body, Small and simple design to meet different requirement, with wonderful 180° rotatable angle to meet different light positions, excellent heat dissipation capability. You can install it in: supermarket, stores, halls, Hotel, Kitchen, Meeting Room, Shopping Mall, etc....

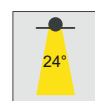
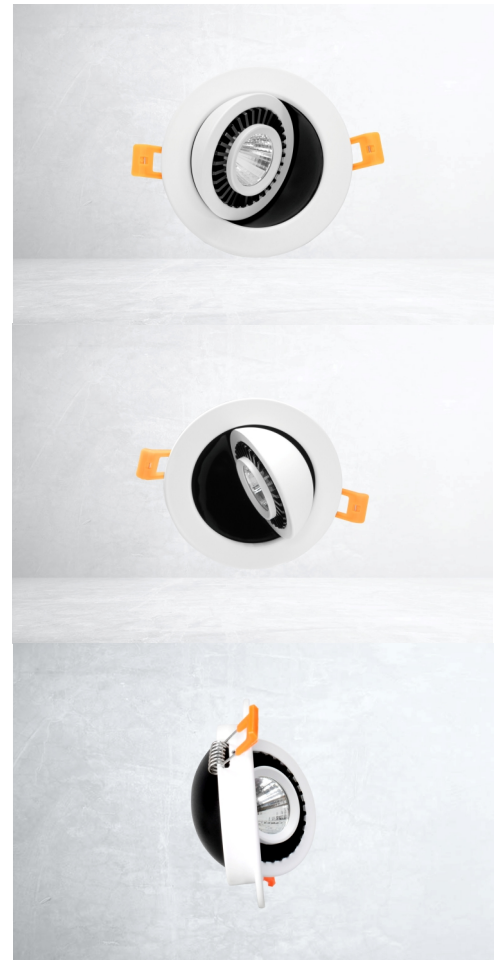
APPROVALS & STANDARDS

Saudi Standard SASO 2902 *	Energy Efficiency, functionality & labeling requirements for lighting products -Part2- As per IEC60598-2-3:2002+A1:2011 IEC60598-1:2014+A1:2017
IECEE certificate *	UL/CSA/CE/ENEC/CCB/CCC
Power supply approval marks	IEC 60529:2013
Degree of protection provided by enclosures, ingress protection(IP)	

*: Approvals and certificate are under process.

TECHNICAL INFORMATION

FAMILY	ROME V
Wattage	5W 7W 15W
CRI	80 90
CCT	2700K 3000K 3500K 4000K 5000K 5700K 6500K
Beam	24°
Lumen	500lm 700lm 1500lm
Finish	White
Material	Die-casting aluminum body and heatsink, PMMA lenes
Driver	Tridonic Philips Lifud



CREE

CITILED
The Light Engine

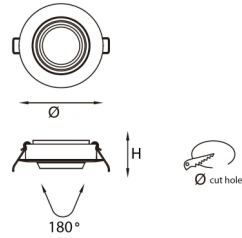
NICHIA

TRIDONIC



CUTOUT & DIMENSION

MODEL	POWER	DIMENSION	CUT HOLE
AESCL1T	5W	Ø88mm * H33mm	Ø75mm
	7W	Ø110mm * H35mm	Ø95mm
	15W	Ø136mm * H55mm	Ø115mm



ORDERING INFORMATION

EXAMPLE : AESCL1T-7W-80-30-PH-ND

Model	Wattage	CRI	CCT	DriverType	Dimming
AESCL1T	7W	80	30	Ph	ND
AESCL1T	5W 7W 15W	80	27 2700K	Tr Tridonic	ND Non Dim
			30 3000K	Ph Philips	TD Triac Dim
			35 3500K	Lf Lifud	VD 0/1-10VDim
			40 4000K		DA DALI Dim
			50 5000K		
			57 5700K		
			65 6500K		

LED CEILING DOWNLIGHT SERIES

Ultra-narrow trim with deep anti-glare design fixture make your decoration effect more artistic and modern ,simple ,elegant unique application. Square and round for selection.

Application: fashion shop, jewelry display and other high end accent lighting areas.







DOWN LIGHT

ROME B FAMILY



APPLICATION

Square Round ceiling- recessed for different application scenarios, with deep anti-glare lenses, with 54 ingress protection (IP54) and 90mm to 135 diameter range option. You can install it in : fashion shop, jewelry display and other high end lighting areas.

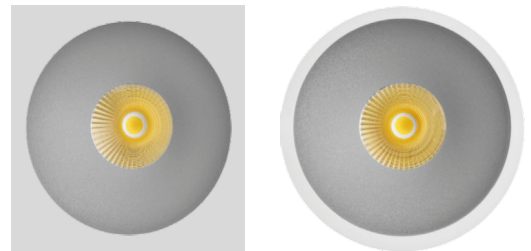
APPROVALS & STANDARDS

Saudi Standard SASO 2902 *	Energy Efficiency, functionality & labeling requirements for lighting products -Part2- As per IEC60598-2-3:2002+A1:2011 IEC60598-1:2014+A1:2017
IECEE certificate *	As per IEC60598-2-3:2002+A1:2011 IEC60598-1:2014+A1:2017
Power supply approval marks	UL/CSA/CE/ENEC/CCB/CCC
Degree of protection provided by enclosures, ingress protection(IP)	IEC 60529:2013

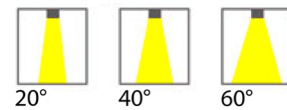
*: Approvals and certificate are under process.

TECHNICAL INFORMATION

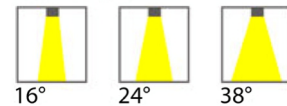
FAMILY	ROME B
Wattage	8W 15W 25W
CRI	80 90
CCT	2700K 3000K 3500K 4000K 5000K 5700K 6500K
Beam	16° 20° 24° 38° 40° 60°
Lumen	8W (635.0lm - 886.0lm) 15W(1120.0lm - 1568.0lm) 24W (1872.0lm - 2040.0lm)
Finish	Silver Black Gold
Material	Die-casting aluminum body and heatsink, PMMA lenes
Driver	Tridonic Philips Lifud

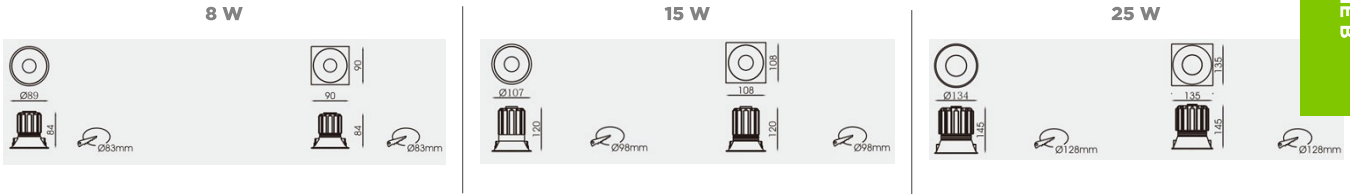


Beam angle for 8W



Beam angle for 15W & 24W





CUTOUT & DIMENSION

MODEL	POWER	DIMENSION	CUT HOLE
AES5210-R	8W	Ø89mm * H84mm	Ø83mm
AES5210-S	8W	L90mm*W90mm*H84mm	83*83mm
AES5210-R	15W	Ø107mm * H120mm	Ø98mm
AES5210-S	15W	L108mm*W108mm*H120mm	98*98mm
AES5210-R	25W	Ø134mm * H145mm	Ø128mm
AES5210-S	25W	L135mm*W135mm*H145mm	Ø128*128mm



ORDERING INFORMATION

EXAMPLE : AES5210-8W-80-30-S-W-24-PH-ND

Model	Wattage	CRI	CCT	Frame	Reflector	Beam	DriverType	Dimming
AES5210	8W	80	30	S	W	24°	Ph	ND
AES5210	8W	80	27 2700K	S Square	W White	15°	Tr Tridonic	ND Non Dim
	15W	90	30 3000K	R Round	B Black	20°	Ph Philips	TD Triac Dim
	25W		35 3500K		S Silver	24°	Lf Lifud	VD 0/1-10VDim
			40 4000K			38°		DA DALI Dim
			50 5000K			40°		
			57 5700K			60°		
			65 6500K					



DOWN LIGHT ROME C FAMILY



APPLICATION

Recessed LED down light with high quality aluminum body, simple design to meet different requirements, with multiple power choices, excellent heat dissipation capability. You can install it in: supermarket, stores, halls, Hotel, Kitchen, Meeting Room, Shopping Mall, etc....



APPROVALS & STANDARDS

Saudi Standard SASO 2902 *	Energy Efficiency, functionality & labeling requirements for lighting products -Part2- As per IEC60598-2-3:2002+A1:2011 IEC60598-1:2014+A1:2017
IECEE certificate *	UL/CSA/CE/ENEC/CCB/CCC
Power supply approval marks	IEC 60529:2013
Degree of protection provided by enclosures, ingress protection(IP)	

*: Approvals and certificate are under process.



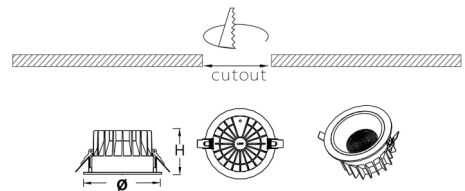
TECHNICAL INFORMATION

FAMILY	ROME C
Wattage	9W 15W 20W 30W 40W 60W
CRI	80 90
CCT	2700K 3000K 3500K 4000K 5000K 5700K 6500K
Beam	60°
Lumen	900lm 1500lm 2000lm 3000lm 4000lm 6000lm
Finish	White
Material	Die-casting aluminum body and heatsink, PMMA lenes
Driver	Tridonic Philips Lifud



CUTOUT & DIMENSION

MODEL	POWER	DIMENSION	CUT HOLE
AESDL1EC	9W	Ø108mm * H52mm	Ø95mm
	15W	Ø142mm * H65mm	Ø125mm
	20W	Ø158mm * H75mm	Ø140mm
	30W	Ø185mm * H88mm	Ø170mm
	40W	Ø226mm * H108mm	Ø210mm
	60W	Ø282mm * H130mm	Ø265mm



Unit: mm



ORDERING INFORMATION

EXAMPLE : AESDL1EC-15W-80-30-PH-ND

Model	Wattage	CRI	CCT	DriverType	Dimming
AESDL1EC	15W	80	30	Ph	ND
AESDL1EC	9W	80	27 2700K	Tr Tridonic	ND Non Dim
	15W	90	30 3000K	Ph Philips	TD Triac Dim
	20W		35 3500K	Lf Lifud	VD 0/1-10VDim
	30W		40 4000K		DA DALI Dim
	40W		50 5000K		
	60W		57 5700K		
			65 6500K		



DOWN LIGHT ROME C FAMILY



APPLICATION

Recessed LED down light with high quality aluminum body, Small and simple design to meet different requirement, with multiple beam angle choices, excellent heat dissipation capability. You can install it in: supermarket, stores, halls, Hotel, Kitchen, Meeting Room, Shopping Mall, etc....

APPROVALS & STANDARDS

Saudi Standard SASO 2902 *	Energy Efficiency, functionality & labeling requirements for lighting products -Part2- As per IEC60598-2-3:2002+A1:2011 IEC60598-1:2014+A1:2017
IECEE certificate *	As per IEC60598-2-3:2002+A1:2011 IEC60598-1:2014+A1:2017
Power supply approval marks	UL/CSA/CE/ENEC/CCB/CCC
Degree of protection provided by enclosures, ingress protection(IP)	IEC 60529:2013

*: Approvals and certificate are under process.

TECHNICAL INFORMATION

FAMILY	ROME C
Wattage	7W 12W 20W 30W
CRI	80 90
CCT	2700K 3000K 3500K 4000K 5000K 5700K 6500K
Beam	15° 24° 38° 60°
Lumen	700lm 1200lm 2000lm 3000lm
Finish	White
Material	Die-casting aluminum body and heatsink, PMMA lenes
Driver	Tridonic Philips Lifud



CREE

CITILED
The Light Engine

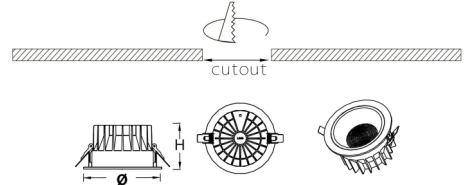
NICHIA

TRIDONIC



CUTOUT & DIMENSION

MODEL	POWER	DIMENSION	CUT HOLE
AESDLE	7W	Ø85mm * H70mm	Ø75mm
	12W	Ø100mm * H85mm	Ø85mm
	20W	Ø140mm * H105mm	Ø115mm
	30W	Ø175mm * H118mm	Ø150mm



Unit: mm



ORDERING INFORMATION

EXAMPLE : AESDLE-12W-80-30-24-PH-ND

Model	Wattage	CRI	CCT	Beam	DriverType	Dimming
AESDLE	12W	80	30	24°	Ph	ND
AESDLE	7W	80	27 2700K	15°	Tr Tridonic	ND Non Dim
	12W	90	30 3000K	24°	Ph Philips	TD Triac Dim
	20W		35 3500K	38°	Lf Lifud	VD 0/1-10VDim
	30W		40 4000K	60°		DA DALI Dim
			50 5000K			
			57 5700K			
			65 6500K			



DOWN LIGHT SUNRISE FAMILY



APPLICATION

Direct replacement for luminaires with compact PMMA diffuser and wide beam angle, comes with different color solution to choose. With efficacy up to 100 lm/w. You can install it for: public areas, stairways, corridors, foyers, shops, etc....

APPROVALS & STANDARDS

Saudi Standard SASO 2902 *	Energy Efficiency, functionality & labeling requirements for lighting products -Part2-
IECEE certificate *	As per IEC60598-2-3:2002+A1:2011 IEC60598-1:2014+A1:2017
Power supply approval marks	UL/CSA/CE/ENEC/CCB/CCC
Degree of protection provided by enclosures, ingress protection(IP)	IEC 60529:2013

*: Approvals and certificate are under process.

TECHNICAL INFORMATION

FAMILY	SUNRISE
Wattage	7W 10W
CRI	80 90
CCT	2700K 3000K 3500K 4000K 5000K 5700K 6500K
Beam	100°
Lumen	74lm 1012lm
Finish	Black White
Material	Die-casting aluminum body and heatsink, PMMA or PS diffuser
Driver	Tridonic Philips Lifud



CREE

LUMILEDS

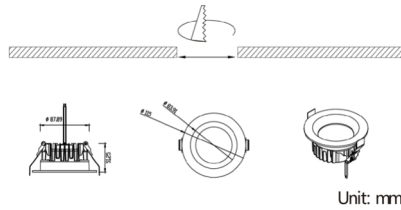
NICHIA

OSRAM



CUTOUT & DIMENSION

MODEL	POWER
AES229	7W
AES229	10W
DIMENSION	CUT HOLE
Ø115mm * H51.5mm	Ø90-105mm
Ø115mm * H51.5mm	Ø90-105mm



Unit: mm

7W	6500k	100°	
	h(m)	D(cm)	E(max)
	1.0	117.6	291.7
	2.0	29.41	72.93
	3.0	13.07	32.41
	4.0	7.352	18.23
	5.0	4.705	11.67



ORDERING INFORMATION

EXAMPLE : AES229-7W-80-30-B-PH-ND

Model	Wattage	CRI	CCT	FrameColor	DriverType	Dimming
AES229	7W	80	30	B	Ph	ND
AES229	7W	80	27 2700K	B Black	Tr Tridonic	ND Non Dim
	10W	90	30 3000K	W White	Ph Philips	TD Triac Dim
			35 3500K		Lf Lifud	VD 0/1-10VDim
			40 4000K			DA DALI Dim
			50 5000K			
			57 5700K			
			65 6500K			



DOWN LIGHT SUNRISE FAMILY



APPLICATION

Direct replacement for luminaires with compact PMMA diffuser and wide beam angle, comes with different color solution to choose. With efficacy up to 100 lm/w. You can install it for: public areas, stairways, corridors, foyers, shops, etc....

APPROVALS & STANDARDS

Saudi Standard SASO 2902 *	Energy Efficiency, functionality & labeling requirements for lighting products -Part2-
IECEE certificate *	As per IEC60598-2-3:2002+A1:2011 IEC60598-1:2014+A1:2017
Power supply approval marks	UL/CSA/CE/ENEC/CCB/CCC
Degree of protection provided by enclosures, ingress protection(IP)	IEC 60529:2013

*: Approvals and certificate are under process.

TECHNICAL INFORMATION

FAMILY	SUNRISE
Wattage	10W 14W
CRI	80 90
CCT	2700K 3000K 3500K 4000K 5000K 5700K 6500K
Beam	100°
Lumen	1095lm 1495lm
Finish	Black White
Material	Die-casting aluminum body and heatsink, PMMA or PS diffuser
Driver	Tridonic Philips Lifud



CREE

LUMILEDS

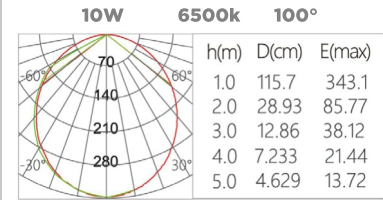
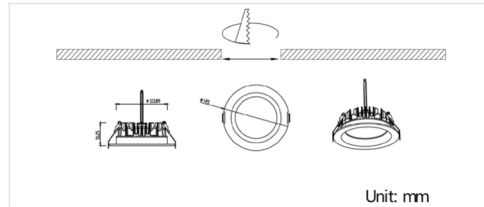
NICHIA

OSRAM



CUTOUT & DIMENSION

MODEL	POWER
AES230	10W
AES230	14W
DIMENSION	CUT HOLE
Ø145mm * H51.5mmØ115-130mm	
Ø145mm * H51.5mmØ115-130mm	



ORDERING INFORMATION

EXAMPLE : AES230-10W-80-30-B-PH-ND

Model	Wattage	CRI	CCT	FrameColor	DriverType	Dimming
AES230	10W	80	30	B	Ph	ND
AES230	10W	80	27 2700K	B Black	Tr Tridonic	ND Non Dim
	14W	90	30 3000K	W White	Ph Philips	TD Triac Dim
			35 3500K		Lf Lifud	VD 0/1-10VDim
			40 4000K			DA DALI Dim
			50 5000K			
			57 5700K			
			65 6500K			



DOWN LIGHT SUNRISE FAMILY



APPLICATION

Direct replacement for luminaires with compact PMMA diffuser and wide beam angle, comes with different color solution to choose. With efficacy up to 100 lm/w. You can install it for: public areas, stairways, corridors, foyers, shops, etc....

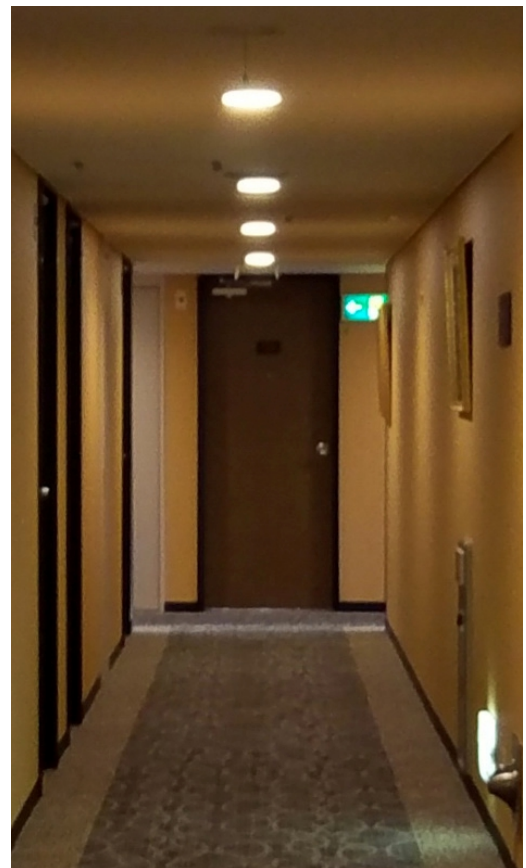
APPROVALS & STANDARDS

Saudi Standard SASO 2902 *	Energy Efficiency, functionality & labeling requirements for lighting products -Part2-
IECEE certificate *	As per IEC60598-2-3:2002+A1:2011 IEC60598-1:2014+A1:2017
Power supply approval marks	UL/CSA/CE/ENEC/CCB/CCC
Degree of protection provided by enclosures, ingress protection(IP)	IEC 60529:2013

*: Approvals and certificate are under process.

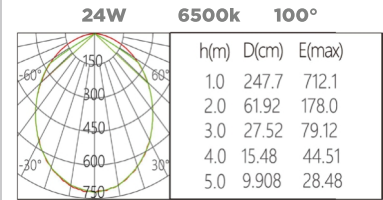
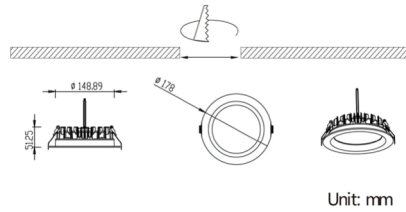
TECHNICAL INFORMATION

FAMILY	SUNRISE
Wattage	18W 24W
CRI	80 90
CCT	2700K 3000K 3500K 4000K 5000K 5700K 6500K
Beam	100°
Lumen	1974lm 2450lm
Finish	Black White
Material	Die-casting aluminum body and heatsink, PMMA or PS diffuser
Driver	Tridonic Philips Lifud



CUTOUT & DIMENSION

MODEL	POWER
AES231	18W
AES231	24W
DIMENSION	CUT HOLE
Ø178mm * H51.5mm Ø150-165mm	
Ø178mm * H51.5mm Ø150-165mm	



ORDERING INFORMATION

EXAMPLE : AES231-18W-80-30-B-PH-ND

Model	Wattage	CRI	CCT	FrameColor	DriverType	Dimming
AES231	18W	80	30	B	Ph	ND
AES231	18W	80	27 2700K	B Black	Tr Tridonic	ND Non Dim
	24W	90	30 3000K	W White	Ph Philips	TD Triac Dim
			35 3500K		Lf Lifud	VD 0/1-10VDim
			40 4000K			DA DALI Dim
			50 5000K			
			57 5700K			
			65 6500K			



DOWN LIGHT SUNRISE FAMILY



APPLICATION

Direct replacement for luminaires with compact PMMA diffuser and wide beam angle, comes with different color solution to choose. With efficacy up to 100 lm/w. You can install it for: public areas, stairways, corridors, foyers, shops, etc....

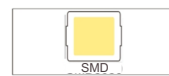
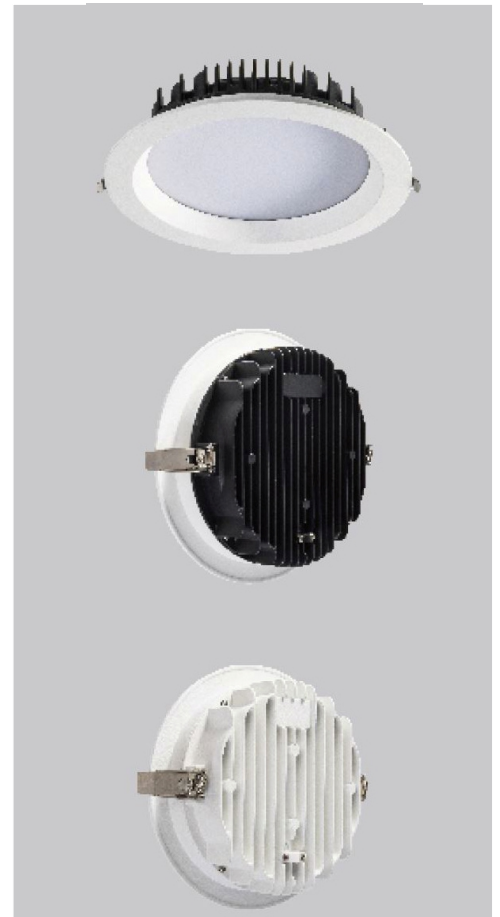
APPROVALS & STANDARDS

Saudi Standard SASO 2902 *	Energy Efficiency, functionality & labeling requirements for lighting products -Part2-
IECEE certificate *	As per IEC60598-2-3:2002+A1:2011 IEC60598-1:2014+A1:2017
Power supply approval marks	UL/CSA/CE/ENEC/CCB/CCC
Degree of protection provided by enclosures, ingress protection(IP)	IEC 60529:2013

*: Approvals and certificate are under process.

TECHNICAL INFORMATION

FAMILY	SUNRISE
Wattage	25W 32W
CRI	80 90
CCT	2700K 3000K 3500K 4000K 5000K 5700K 6500K
Beam	100°
Lumen	3062lm 3584lm
Finish	Black White
Material	Die-casting aluminum body and heatsink, PMMA or PS diffuser
Driver	Tridonic Philips Lifud



CREE

LUMILEDS

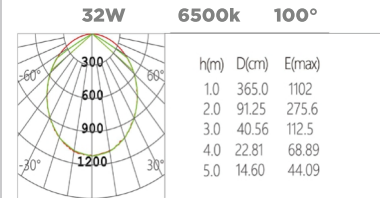
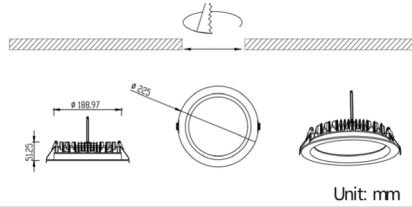
NICHIA

OSRAM



CUTOUT & DIMENSION

MODEL	POWER
AES232	25 W
AES232	32 W
DIMENSION	CUT HOLE
Ø228mm * H51.5mm Ø190-210mm	
Ø228mm * H51.5mm Ø190-210mm	



ORDERING INFORMATION

EXAMPLE : AES232-25W-80-30-B-PH-ND

Model	Wattage	CRI	CCT	FrameColor	DriverType	Dimming
AES232	25W	80	30	B	Ph	ND
AES232	25W	80	27 2700K	B Black	Tr Tridonic	ND Non Dim
	32W	90	30 3000K	W White	Ph Philips	TD Triac Dim
			35 3500K		Lf Lifud	VD 0/1-10VDim
			40 4000K			DA DALI Dim
			50 5000K			
			57 5700K			
			65 6500K			



DOWN LIGHT SUNRISE FAMILY



APPLICATION

Direct replacement for luminaires with compact PC diffuser and wide beam angle, with high ingress protection (ip65). You can install it for: public areas, bathroom, Airport, mosque, Cinema, Gallery, Hospital, Hotel, Kitchen, Meeting Room, Shopping Mall, etc....

APPROVALS & STANDARDS

Saudi Standard SASO 2902 *	Energy Efficiency, functionality & labeling requirements for lighting products -Part2-
IECEE certificate *	As per IEC60598-2-3:2002+A1:2011 IEC60598-1:2014+A1:2017
Power supply approval marks	UL/CSA/CE/ENEC/CCB/CCC
Degree of protection provided by enclosures, ingress protection(IP)	IEC 60529:2013

*: Approvals and certificate are under process.

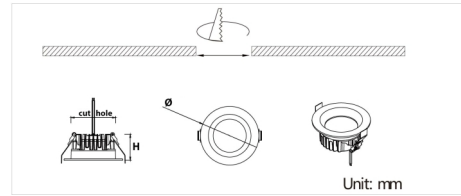
TECHNICAL INFORMATION

FAMILY	SUNRISE
Wattage	10W 15W 20W 30W 40W
CRI	80 90
CCT	2700K 3000K 3500K 4000K 5000K 5700K 6500K
Beam	120°
Lumen	1000lm 1500lm 2000lm 2500lm 3000lm
Finish	White
Material	Die-casting aluminum body and heatsink, PMMA or PC diffuser
Driver	Tridonic Philips Lifud



CUTOUT & DIMENSION

MODEL	POWER	DIMENSION	CUT HOLE
AES250	10W	Ø115mm * H48mm	Ø100mm
	15W	Ø145mm * H61.5mm	Ø130mm
	20W	Ø159mm * H59.5mm	Ø145mm
	30W	Ø190mm * H59.5mm	Ø170mm
	40W	Ø230mm * H72mm	Ø205mm



ORDERING INFORMATION

















EXAMPLE : AES250-10W-80-30-PH-ND

Model	Wattage	CRI	CCT	DriverType	Dimming
AES250	10W	80	30	Ph	ND
AES250	10W	80	27 2700K	Tr Tridonic	ND Non Dim
	15W	90	30 3000K	Ph Philips	TD Triac Dim
	20W		35 3500K	Lf Lifud	VD 0/1-10VDim
	30W		40 4000K		DA DALI Dim
	40W		50 5000K		
			57 5700K		
			65 6500K		

INGRESS PROTECTION

IP Ratings are an international numeric classification to indicate the degrees of protection provided by enclosures for electrical equipment against water and solid object accordance with IEC 60598-1:2003.

IPXX

	0 No protection against contact and ingress of objects.		0 No protection against ingress of water.
	1 Protected against solid objects Ø>50 mm and greater, such as the back of a hand.		1 Protected against dripping water; vertically falling drops shall have no harmful effect on the device when mounted in a normal position.
	2 Protected against solid objects Ø>12.5 mm and greater, such as fingers or similar objects.		2 Protected against dripping water; vertically falling drops shall have no harmful effect on the device when the enclosure is tilted at an angle of 15° from its normal position.
	3 Protected against solid objects Ø>2.5 and greater, such as tools, thick wires, etc.		3 Protected against water falling as a spray at any angle up to 60° from the vertical line.
	4 Protected against solid objects Ø>1 mm and greater, such as wires, large ants etc.		4 Protected against splashing water; water splashed against the enclosure from any direction shall have no harmful effect.
	5 Dust protected, ingress of dust is not entirely prevented, but it must not enter in sufficient quantity to interfere with the satisfactory operation of the equipment.		5 Water projected by a nozzle (6.3 mm) under 30kPa pressure at distance of 3 meters from any direction shall have no harmful effects.
	6 Dust-tight, no ingress of dust; complete protection against dust (dusttight).		6 Water projected in powerful jets (12.5 mm) under 100kPa pressure at distance of 3 meters from any direction shall have no harmful effects.
			7 protected against the effects of temporary immersion of water; no harmful effect is possible when the enclosure is immersed in water under defined conditions of pressure and time (up to 1 meter maximum of submersion).
			8 The equipment is suitable for continuous immersion in water as per the conditions specified by the manufacturer.

IMPACT PROTECTION

IK Ratings are an international numeric classification to indicate the degrees of protection provided by enclosures against external mechanical impacts in accordance with IEC 62262:2002.

IKXX

00	No protection.	06	Protected against 0.25kg mass of impact dropped from 400mm above the impacted surface.
01	Protected against 0.25kg mass of impact dropped from 56mm above the impacted surface.	07	Protected against 0.5kg mass of impact dropped from 400mm above the impacted surface.
02	Protected against 0.25kg mass of impact dropped from 80mm above the impacted surface.	08	Protected against 1.7kg mass of impact dropped from 300mm above the impacted surface.
03	Protected against 0.2kg mass of impact dropped from 140mm above the impacted surface.	09	Protected against 5kg mass of impact dropped from 200mm above the impacted surface.
04	Protected against 0.25kg mass of impact dropped from 200mm above the impacted surface.	10	Protected against 5kg mass of impact dropped from 400mm above the impacted surface.
05	Protected against 0.25kg mass of impact dropped from 280mm above the impacted surface.		

REFERENCE STANDARDS

• SASO 2902	Energy efficiency, functionality and labeling requirements for lighting products (part 2).
• SASO 2927:2019	Energy efficiency functionality and labeling requirements for lighting products-part 3: Street lighting.
• IES 610000-3-2	Electromagnetic compatibility (EMC) - Part 3-2: Limits for harmonic current emissions (equipment input current 16 A per phase).
• IEC 62471	Photo biological Safety of Lamps and Lamp Systems.
• IEC TR 62778	Application of 62471 to light sources and luminaires (blue light).
• IEC 60598-1/2017	Luminaires - Part 1: General requirements and tests.
• IEC 61547:2009	Equipment for general lighting purposes - EMC immunity requirements.
• IEC 61643-11:2011	Low-voltage surge protective devices - Part 11: Surge protective devices connected to low-voltage power systems Requirements and test methods.
• IES LM-79-08	Electrical and photometric measurements of Solid State lighting products.
• IES LM-80-08	Measuring lumen maintenance of LED Light sources.
• IES LM-82-12	Method for characterisation of LED light Engines and Integrated LED lamps for Electrical properties as a function of the temperature.
• IES LM-84-14	Measuring Luminous Flux and Color Maintenance of LED Lamps, Light Engines, and Luminaires.
• ISTMT	In-SITU Temperature Measurement Testing.
• IES TM21-11	Projecting long term lumen maintenance of LED light sources.
• IES TM28-14	Projecting long-term luminous flux maintenance of LED lamps and luminaires.
• IEC 60529:2013	Degrees of protection provided by enclosures (IP Code).
• ISO 9227:2017	Corrosion tests in artificial atmospheres Salt spray tests.
• ISO 4628-2:2016	Paints and varnishes - Evaluation of degradation of coatings Designation of quantity and size of defects, and of intensity.



CATALOGUE 1.4

Advanced Energy Solutions

Head Quarter

6556 Salah Ad Din Al Ayyoubi Rd-
Al Malaz Dist.
Unit No 6583
Riyadh 12627 - 4901
Kingdom of Saudi Arabia
Tele: + 966 11 472 9999
www.aesco.com.sa

Riyadh Sales Office

8534 King Abdul Aziz RD
As Sulaimaniyah
Riyadh 12245-3835

AESCO Plant

11564 Al Kharj Rd
Industrial Gate City
Riyadh
Kingdom of Saudi Arabia